

18th July 2025

Dear Parents/Carers

End of Summer Term and Start of Term Arrangements

During the last few weeks, we have had the pleasure of celebrating more events with our students and staff, including Sports Day and Rewards Day as well as other activities which Mrs Hesmondhalgh shared in her recent communication. It is important that we celebrate all the amazing things that our students have done and achieved with the support and dedication of our hardworking staff, ending a busy, focused and fun-packed year on a positive note.

We have welcomed 250 new year 7 students into school this week, our final week of 24/25, so that they better understand high school routines and systems, and get to know some of their teachers, build new relationships and make new friends before the new term starts in September 2025. It has been lovely to see the way in which older students have supported the transition of year 6/7 students into Whitcliffe Mount so that they feel welcomed and an important part of our school community from their very first day. We are delighted to have them as part of our school and are very proud of all our students for working hard, being resilient and showing empathy and respect to all.

I would like to share some final reminders with students, parents and carers so that everyone feels prepared and has the information that they need before we break for the summer holiday. Additional information can also be found on our school website [Whitcliffe Mount, A SHARE Academy - Home](https://www.whitcliffemount.co.uk).

School Day 2025/26

The school days remains the same as this academic year. **It is recommended that students should be in the school building by 8.20am each day. The school day begins at 8.30am.** The school day and timings are as follows:

8.00am	School open to students
8.30am - 8.35am	5-minute movement time
8.35am – 9.05am	Personal Development*
9.05am – 10.05am	Period 1*
10.05am – 11.05am	Period 2*
11.05am – 11.25am	Break
11.25am – 11.30am	5-minute movement time
11.30am – 12.30pm	Period 3*
12.30pm – 1.00pm 12.30pm – 1.30pm	Lunch 1 – Y8/10/11 (plus 5-minute movement at 12.55pm) Period 4 – Y7/9*
1.30pm – 2pm 1pm – 2pm	Lunch 2 – Y7/9 (plus 5-minute movement at 1.55pm) Period 4 – Y8/10/11*
2pm – 3pm	Period 5

*5-minute movement in between each lesson.



01274 851152



Whitcliffe Mount,
A SHARE Academy
Turnsteads Avenue, Cleckheaton,
West Yorkshire BD19 3AQ



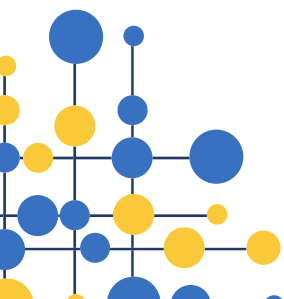
whitcliffe.office@sharemat.co.uk

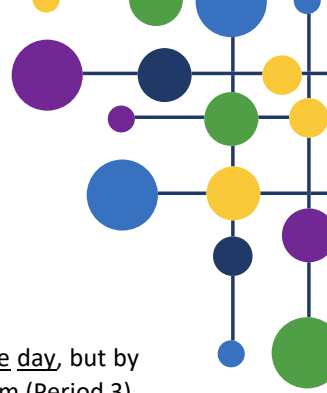


www.whitcliffemount.co.uk

Valuing people, supporting personal best

Share Multi-Academy Trust, an exempt charity and a company limited by guarantee. Registered in England and Wales 07729878.
Head Office SHARE Multi-Academy Trust, c/o Shelley College, Huddersfield Road, Shelley, Huddersfield, HD8 8NL

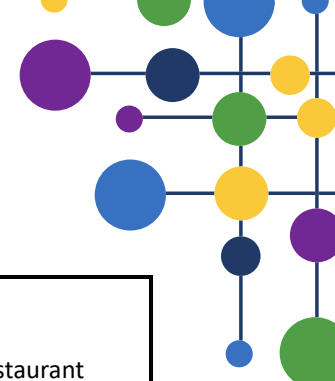




Start of term in September 2025

The start of the term for **all students** is Tuesday 2nd September. We are staggering the first hour of the day, but by **9.40am all students** will be expected to be in the building. Lessons will begin for **all students** at 11.30am (Period 3). This is Week A on our timetable. The arrangements for the start of the new term in September will facilitate the induction programme for all students and it is absolutely vital that all students attend as outlined below. Food arrangements will be available to all students at break and lunchtime on the first day back; as well as breakfast for our new Year 7's. The arrangements for the first day will look like this:

Tuesday 2 nd September 2025		Arrival time
8.00am - 8.30am	Y7 arrival to school - into the restaurant	8:00am – 8:30am – straight to restaurant
8.40am - 9.00am	Y7 Assembly with the Head	
9.05am - 11.00am	Y7 Personal Development (PD) Activities	
8.30am - 9.00am	Y8 arrival to school - into the restaurant	8:30am – 9.00am – straight to restaurant
9.05am - 9.25am	Y8 Assembly with the Head	
9.30am - 11.00am	Y8 Personal Development (PD) Activities	
9.00 - 9.30am	Y9 & Y10 arrival to school - into the restaurant	9.00 – 9.30am – straight to restaurant
9.35am - 10.00am	Y9 Assembly with the Head	
10.05am - 11.00am	Y9 Personal Development (PD) Activities	
9.35am - 10.00am	Y10 Personal Development (PD) Activities	
10.05am - 10.30am	Y10 Assembly with the Head	
10.30am - 11am	Y10 Personal Development (PD) Activities	



09:20 – 09:40am	Y11 arrival to school - into the restaurant	9.20 - 9.40am – straight to restaurant
9.45am - 10.35am	Y11 Personal Development (PD) Activities	
10.35am - 11.00am	Y11 Assembly with the Head	
11.05am - 11.25am	Whole School Break	
11.30am -12.30pm	Period 3 Lessons	
12.30pm - 2pm	Period 4 and Lunch	
2pm – 3pm	Period 5	

Entrances for students will remain at the main entrance.

For the first day back **only**, parent/carers can walk their children up the drive. The exits will be dependent on the classrooms that students leave at the end of period 5, which will be shared with students in September.

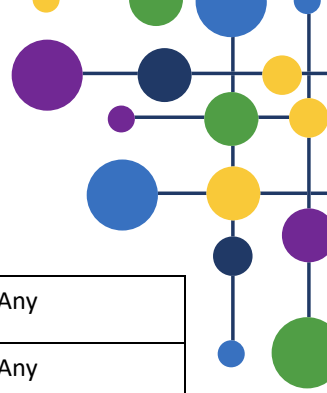
Car park updates

Over the summer fencing and electronic gates will be installed at the entrance to the car park to ensure the safety of our students, staff, and visitors. Our car park remains designated for staff only. As visitors, you are still welcome to use the bottom two car parks which will remain accessible without going through the gates. If your child has a disability or restricted mobility and you require access to our accessibility parking bay, you will need to contact Katie Bland (Deputy Head) on katie.bland@sharemat.co.uk. We will then review the requests and provide you with a solution for entering the site through the gates.

School Uniform

From September 2025 the Whitcliffe Uniform policy will need to be adhered to by all students and sanctions will be given for uniform infringements, as per our behaviour policy. The school uniform is now available for purchase in store or online (for delivery). To remind you of the policy that has now been in place since September 23:

Item of clothing	2023/24 and beyond policy	Supplier
Black blazer	<u>WMS 'new logo' blazer</u> – all students	Uniform supplier
White school shirt	Plain white school shirt	Any
School tie	<u>WMS school tie from September 2024</u> (colour linked to year group) 7 – Purple 8 – Yellow 9 – White 10 – Green 11 – Blue	Uniform supplier
Black school skirt	<u>Tailored</u> black school skirt (straight or pleated)	Any
Black school trousers	<u>Tailored</u> black school trousers	Any



Black school tights or socks	Plain <u>black</u> school tights or socks	Any
Black school shoes	Black polishable <u>school shoes</u> (not trainers)	Any
Black V-neck school jumper (optional)	Black V-neck school jumper with WMA logo	Uniform supplier

WMS PE Kit – September 2023 and beyond (all phased in by September 2025)

Item of clothing	2023/24 and beyond policy	Supplier
WMS PE top	Navy round neck sports top (short sleeved) with WMS logo.	Uniform supplier
WMS PE ½ zip training top (optional)	¼ zip training top (long sleeved) with WMS logo	Uniform supplier
WMS PE sports rain jacket (optional)	Navy sports rain jacket with WMS logo	Uniform supplier
Tracksuit bottoms	Plain navy slim leg tracksuit bottoms	Uniform supplier
Leggings	Plain navy leggings (<u>no logo</u>)	Any/Uniform supplier
Shorts	Plain navy shorts (<u>no logo</u>)	Any/Uniform supplier
Sports socks	Navy sports socks	Any/Uniform supplier
Sports trainers	Sports trainers	Any

To remind you, our uniform suppliers are:

Rawcliffes - 18A Crackenedge Lane, Dewsbury WF13 1PT Contact: 01924 465510 www.smartschoolwearcentre.co.uk

Smart Uniforms, 1-3 Cheapside, Batley WF17 5ND

Contact: 01924 442294 <https://smartuniforms.co.uk/collections/whitcliffe-mount>

If you require support with the school uniform, please contact us to discuss. Alternatively, you can visit the Uniform Exchange online to request free uniform: <https://www.uniform-exchange.org/free-school><https://www.uniform-exchange.org/free-school-uniform/uniform/>. You can also donate if you have uniform you no longer need: <https://www.uniform-exchange.org/donation-points/exchange.org/donation-points/>.

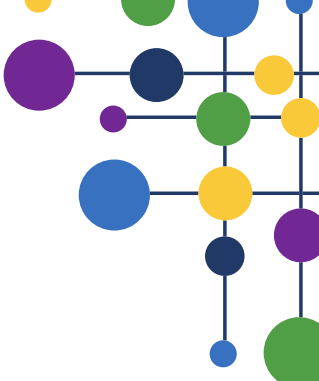
School equipment:

All students are expected to bring a school bag (A4 folder size) containing the following:

- Student Planner
- Exercise books in accordance with the timetable
- Scientific calculator – Sharp WriteView EL-W531TL

Pencil case containing:

- Black ball point pens
- Green ball points pens
- Pencils
- Ruler
- Pencil Sharpener

- 
- Rubber
 - Highlighter
 - Glue Stick

The following will be provided by school, and students are expected to have them every day in their school bag:

- Student planner
- The exercise books for the lessons timetabled that day

The school bag is a really important part of our school equipment as students are expected to carry all equipment and PE kit in this. We will complete checks on entry as part of our morning routine to ensure that students have the correct uniform, a school bag and their equipment.

During Personal Development (PD) time on the first day back students will receive their new planner and timetable for 2025/26 and sign their ICT Acceptable Use Policy with their PD tutor. We also require **all parent/carers** to sign the Home School Agreement, which can be found here: <https://forms.office.com/e/v84r4GSGcu>

School photographs:

Photographers will be in school on Monday 8th September to take individual school photographs of all students in the years 7 & 9. Full school uniform needs to be worn in line with our school uniform policy.

I would like to thank all students for their hard work, commitment and ability to always try their very best. Their support for each other and their ability to not give up and to try new things frequently amazes me. I would also like to thank parents and carers for the help, guidance and ability to work with school to help your child(ren) achieve their personal best and to be good active citizens and positive members of our school community. It remains a privilege to work with the Whitcliffe school community.

I wish everyone a safe, restful and happy holiday and look forward to welcoming everyone back to WMA on Tuesday 2nd September 2025.

Yours sincerely,



Miss K Bland
Deputy Headteacher