

September 2025

Dear Parents/Carers of Year 5 and 6 students,

Year 5 & 6 Open Evening – Wednesday 1st October 2025 – 5.00pm – 7.30pm

Whitcliffe Mount Academy are delighted to warmly invite you to attend our Year 5 & 6 Open Evening on **Wednesday 1st October 2025**.

At Whitcliffe Mount, we understand the significance of selecting the right school for each and every child. Deciding where your child(ren) will attend secondary school is not only a very exciting time for you and your child(ren) but a very important one, as you consider which school setting is right for them as an individual and for you as a family. Our open evening is an opportunity for you to learn more about the school, to meet with current staff and students and to learn how we support every child to achieve their personal best in our lovely new purpose-built school building. You are invited to attend our presentation, to take a tour with students and to wander the building experiencing what life is like at Whitcliffe Mount. We really do hope that you can join us.

In the academic year of 2022/23, we launched our new school ethos of “Together, we are proud to be our best”, with an overarching aim of creating a proud school community where students feel safe and are happy at school, learn well, and develop and grow together in a positive and aspirational school environment. This ‘strapline’ is lived in everything that we do. In 2024 we achieved our highest outcomes ever and were named in the top 50 most improved schools by The Excellence Hub. In 2025 we welcomed Ofsted back to Whitcliffe Mount for an ungraded inspection. This is where inspectors check to see if the current ‘grade’ is maintained. We are delighted to uphold our ‘Good’ judgement and receive comments that highlight how much students, parents and carers value the changes made in recent years and the support and opportunities offered to all at Whitcliffe Mount. Statements such as *“Pupils enjoy attending this welcoming school.”* and *“They know that someone cares for them and that they are a part of this school community.”* are an example. You can read the full report here [OFSTED report](#).

Our school community deserves a very good school that sets high expectations and embeds best practice so that the teaching, learning, pastoral care and the wealth of activities that our students experience is strong. We want all students to feel a sense of belonging at WMA and by working 'Together, we are proud to be our best'.



01274 851152



Whitcliffe Mount,
A SHARE Academy
Turnsteads Avenue, Cleckheaton,
West Yorkshire BD19 3AQ



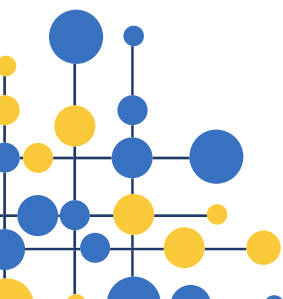
whitcliffe.office@sharemat.co.uk

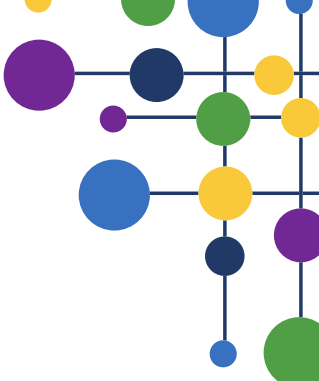


www.whitcliffemount.co.uk

Valuing people, supporting personal best

Share Multi-Academy Trust, an exempt charity and a company limited by guarantee. Registered in England and Wales 07729878.
Head Office SHARE Multi-Academy Trust, c/o Shelley College, Huddersfield Road, Shelley, Huddersfield, HD8 8NL





Our students and staff are looking forward to warmly welcoming you and showing you everything that our academy offers. The academy will be open from 5.00pm until 7.30pm. You are invited to tour the school and attend a Headteacher presentation taking place at 5.00pm, 5.45pm and 6.30pm where you will hear from myself, the headteacher and some of our students about their experience of being a student at Whitcliffe Mount. Throughout the evening you will have opportunity to meet some of our amazing student leaders, to chat to a breadth of teaching staff from across the curriculum and to participate in activities that showcase everything that our broad and balanced curriculum offers.

Tickets for the Headteachers' presentations can be booked by following the link <https://www.ticketsource.co.uk/whitcliffemount> or by scanning the QR code below. Please note, you do not need a ticket to tour the school.



For Parents/Carers of Year 6 students, we understand how complex the application process can sometimes be, therefore we will open up our computer facilities and have staff on hand to guide you through the application process should you need it. We understand how important being allocated to your first-choice school can be so we encourage you to ensure that your secondary school application is submitted by the deadline of **31st October 2025**. You may wish to bring your 'log in' for applying online if you have one and you will also need to know your own personal email address should you wish to use our computer facilities.

We anticipate that this will be a very busy evening and hence car parking will be very limited.

We look forward to meeting you and your child(ren) on **Wednesday 1st October 2025** and welcoming you to the Whitcliffe Mount Academy community.

Yours faithfully



Mrs R Hesmondhalgh
Headteacher