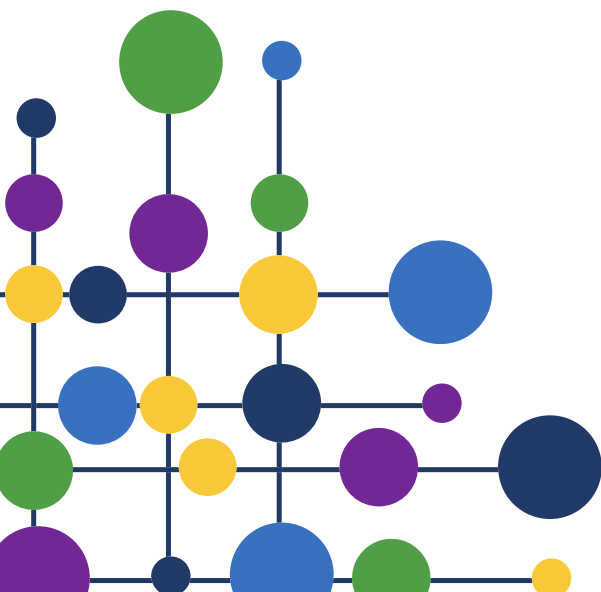


Whitcliffe Mount RS – Right to Withdraw

School Version	1.0
Date written	November 2025
Next review due date	November 2027



Context

- Whitcliffe Mount delivers Religious Education (RE) in line with SACRE guidance
- Whitcliffe Mount recognises the education value of Religious Education in the school curriculum and we support a high number of students in the completion of the GCSE option.
- Whitcliffe Mount also recognises the excellent contribution RE makes to Spiritual, Moral, Social and Cultural (SMSC) development across the school.

Legal requirements

The National Curriculum states that:

Every state-funded school must offer a curriculum which is balanced and broadly based, and which:

- promotes the spiritual, moral, cultural, mental and physical development of pupils, and
- prepares pupils at the school for the opportunities, responsibilities and experiences of later life ...

All state schools ...must teach religious education... All schools must publish their curriculum by subject and academic year online.

DfE, The National Curriculum in England: Framework Document, September 2013, p.4

Breadth of RE: Whitcliffe Mount recognises that RE ‘must reflect the fact that the religious traditions in Great Britain are in the main Christian, while taking account of the teaching and practices of the other principal religions represented in Great Britain’ (Education Act (1996 Section 375 (3)) Schools’ Standards and Framework Act (1998, Schedule 19, para 5). The breadth of RE is referred to in more detail in our curriculum documents, available on our website at [Whitcliffe Mount, A SHARE Academy - Religious Studies](#)

Right of withdrawal: Parents (or students who are over 18) have the right to withdraw their children either partly or wholly from RE. In addition, teachers have the right not to teach the subject. Our approach to RE, however, has been constructed in the hope that parents and teachers will rarely, if ever, wish to exercise their right of withdrawal