

12th November 2025

Dear Parents and Carers,

Year 11 Mock Examinations

We are very proud of how Year 11 have started the year and are working hard in lessons and preparing for their GCSEs. We are especially impressed with the number of students that are attending Achieve revision sessions after school. Thank you for your ongoing support with this.

Our aim is for all our students to succeed to their full potential in their final year at WMA and we remain committed to supporting our students to ensure they feel confident and are well prepared for each GCSE they are sitting. We encourage all of our students to continue to approach their lessons with a positive attitude, regularly communicate with their subject teachers, revise at home and act on their teachers' advice. We are confident that the students who continue to do this will be rewarded with some excellent results in the summer.

The following communication is rather lengthy but essential for all to understand the mock and final examination process, support and schedule. We hope you find it useful.

Mock Exams

This morning (Wednesday 12th November), Year 11 students attended an assembly outlining the final details around their **mock exams which commence on 2nd December 2025**. Students will shortly receive a personalised mock timetable, complete with entry tiers and seat numbers. Details of French and Spanish Speaking times will be communicated to students by their teachers. The full mock timetable is available on our website here:

[Whitcliffe Mount, A SHARE Academy - Exams](#)

We are aware that students may have completed application forms for Post 16 provision with their current and predicted grades from their Year 10 mocks. However, the grades from the December mock exams will be taken to their college/apprenticeship interviews and so it is important that students put their full effort into these exams and achieve their best possible grades.

Should, for any reason, exams be cancelled or students are unable to attend their GCSE exams for any reason, JCQ and Ofqual require us to be able to calculate a final grade using evidence from mock exams. For this additional reason, it is again important that students put their full effort into these exams and achieve their best possible grades.



01274 851152



Whitcliffe Mount,
A SHARE Academy
Turnsteads Avenue, Cleckheaton,
West Yorkshire BD19 3AQ



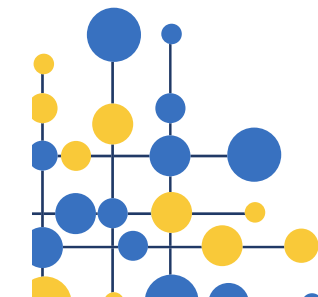
whitcliffe.office@sharemat.co.uk



www.whitcliffemount.co.uk

Valuing people, supporting personal best

Share Multi-Academy Trust, an exempt charity and a company limited by guarantee. Registered in England and Wales 07729878.
Head Office SHARE Multi-Academy Trust, c/o Shelley College, Huddersfield Road, Shelley, Huddersfield, HD8 8NL





Students are expected in school full time during their mock exams. Normal lessons will continue when they do not have an exam scheduled. The only exception to this is, should an exam finish after 2.30pm, we will not be expecting students to return to lessons and will instead be allowing them to leave school straight from that exam. If they wish to attend an Achieve session after school on that day, we will allow them to remain in school and will supervise until this session starts.

Students will receive their mock exam results on Tuesday 10th February 2026, along with revised working at and predicted grades. We are holding Y11 parents evening just after this on Thursday 26th February 2026 so you can meet individual teachers to discuss these results and the final preparation for the summer exams. More details will be provided nearer the time.

Personal Development time and Revision

Achieve sessions are already well established in school and will continue to run up to and through mock exams. The timetable for this is available on our website here: [Whitcliffe Mount, A SHARE Academy - Learning Beyond the Classroom](#).

Every morning all students at Whitcliffe Mount benefit from Personal Development time with their PD tutor. Since September, some of this time has been used to support Year 11's in exploring their options for education and training once they leave WMA and explaining the application process to them. Following this support, all students should now be confident in independently completing their college and/or apprenticeship applications.

As such, we are now going to use PD time to support students with revising for their mocks and summer exams. They will be supported with creating a revision timetable and with learning a number of techniques to support them in "how to" revised for different subjects.

Teachers in individual subjects will also be providing students with information to be support them in preparing for their mock exams.

Further Examination Details and Regulations

I would like to take this opportunity to remind you of the rules and regulations around the management of exams. We follow these same regulations through mock exams, so the experience mirrors the summer season as closely as possible.

- Students must follow the JCQ (Joint Council of Qualifications) rules and regulations in all examinations.
- All students have been sent the JCQ information for candidates' booklet via email which details the rules and regulations that are expected to be followed in the exam hall. These expectations were reshared on Wednesday in assembly. The document is also available on the school website: [Whitcliffe Mount, A SHARE Academy - Exams](#). **Please support us in ensuring the students are familiar with these expectations.**
- Any behaviour that contravenes these rules could result in disqualification and loss of mark for the exam, please ensure that your child is aware of this document and does not bring anything into the hall that could constitute malpractice.
- Please ensure that your child is fully prepared and arrives at each examination with the necessary equipment. Basic equipment includes black pen(s), pencil, ruler, sharpener, calculator, eraser and any equipment specified by the subject teacher.
- They may have a water bottle in the exam, but these must be completely clear, with no printing or labels.
- If your child has Access Arrangements, they will receive the appropriate support throughout their exams. You will have been contacted by the SEND team if this applies to your child.



GCSE Examinations and Results Day

GCSE's commence on Tuesday 5th May 2026 and the last exam on the common timetable is on Wednesday 17th June 2026.

There is an exam contingency day on Wednesday 24th June 2026 and all students must still be available on this date. This date is an exam contingency date and will be used by the exam boards in the event of national or significant local disruption to examinations in the UK.

GCSE results will be available for collection from Whitcliffe Mount on the **morning of Thursday 20th August 2026** and we will communicate the arrangements for this nearer the time.

Attendance and Punctuality

Whilst attendance and punctuality are always important at school, at this vital time in your child(ren)'s academic journey it is essential that all students attend, remain in school and are punctual. At this point in Year 11 every moment counts.

We also need our students to be ready to learn in every lesson and this includes arriving with the correct equipment:

All students are expected to bring a school bag (A4+ folder size) containing the following daily:

School Planner	Pencil case
Scientific calculator – Share WriteView EL-	Black ball point pens
Exercise books in accordance with the	Green ball point pens
Pencil	Ruler
Pencil Sharpener	Rubber
Highlighter	Glue Stick

We thank you for your ongoing support with ensuring your child(ren) attend every day, arriving on time with the correct equipment.

Further Support

Should you have any concerns from a pastoral perspective, please don't hesitate to contact the Year 11 Head of Year at Natasha.Donaldson@sharemat.co.uk

Should you have any concerns of an academic nature, please contact myself at helen.jeffrey@sharemat.co.uk or christopher.elstub@sharemat.co.uk

Thank you again for your continued support.

Yours faithfully

Mrs H Jeffrey
Deputy Headteacher (Quality of Education)