

11<sup>th</sup> December 2025

Dear parent and carers,

### **End of Term Letter – December 2025**

As we move rapidly towards the end of 2025, I wanted to write to share some good news stories, updates and my thanks for your continued support. Firstly, I would like to confirm that **Friday 19<sup>th</sup> December is a normal school day, with some celebrations and a 2pm finish for all students.** Students will be dismissed from Period 4/lunch and we hope to have all students out of the building by 2.15pm.

It has been a busy year at Whitcliffe Mount, yet one that has been filled with exciting opportunities, hard work and resilience, and community events that celebrate our core values. Last week we welcomed back our class of 2025, parents and carers at our annual 'Year 11 Leavers Awards' to celebrate all that they achieved throughout their time at WMA and in their examination results. It was great to welcome them back and to remind them that they will always be a Whitcliffian!

In 2025, we have enjoyed celebrating the many, many positive things our students have done in lessons, in extra-curricular activities, at social times and outside of school. This year already we have awarded over 31,000 positive points to our students, praising them for showing positive character traits such as empathy, respect and tolerance, cooperating well with others and showing strong personal and leadership skills. These are all values, traits and skills that we encourage our students to develop and so that they can achieve personal success and feel a sense of pride in themselves, as classes and year groups and as a whole school community. We are celebrating the end of half term 2 with advent assemblies, a trip with year 7 to see Snow White at Bradford Alhambra, Christmas rewards lunch and Christmas jumper day.

#### **Upcoming dates for your diary:**

- Weeks beginning 8<sup>th</sup> & 15<sup>th</sup> December – **Zero Hero Rewards** (0 days absent and 0 lates).
- Tuesday 16<sup>th</sup> December – **Christmas Showcase**
- Wednesday 17<sup>th</sup> December – **Christmas Dinner and Christmas Jumper Day!**
- Thursday 18<sup>th</sup> December – **Year 9 Parents Evening**
- Friday 19<sup>th</sup> December – **Christmas accessories** (with school uniform) and **wear your own shoes day!**

In 2025 our students have represented school in local events including the Cleckheaton Remembrance Parade, and as teams and individuals in sporting events, STEM competitions, in dance and theatre shows, in the Cleckheaton light switch-on and as extra's on TV. We are proud of all that they have achieved and look forward to celebrating all that they accomplish in the future.



01274 851152



Whitcliffe Mount,  
A SHARE Academy  
Turnsteads Avenue, Cleckheaton,  
West Yorkshire BD19 3AQ



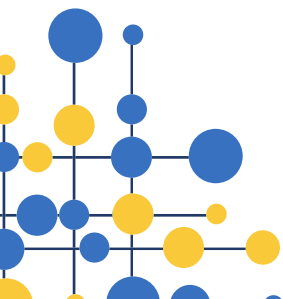
whitcliffe.office@sharemat.co.uk

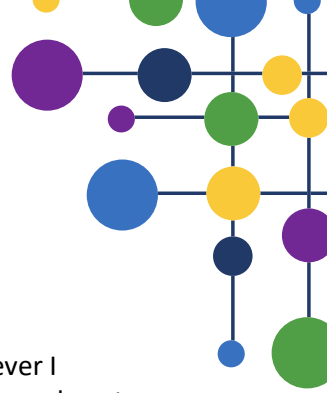


www.whitcliffemount.co.uk

Valuing people, supporting personal best

**Share Multi-Academy Trust**, an exempt charity and a company limited by guarantee. Registered in England and Wales 07729878.  
**Head Office** SHARE Multi-Academy Trust, c/o Shelley College, Huddersfield Road, Shelley, Huddersfield, HD8 8NL





You were all updated about the change of Headteacher earlier in the term by the Trust, however I thought it important that I shared the following information with you. After what will have been almost 4 years as Headteacher I have made the difficult decision to leave Whitcliffe Mount at the end of this academic year for personal reasons. This is not a decision that I have made lightly. It continues to be an absolute privilege to lead our amazing school community, and I remain fully and wholeheartedly committed to the school, the amazing students, staff and wider school community. I will continue to focus on ensuring that “together, we are proud to be our best” and in fostering a strong sense of belonging for all our students in a safe, aspirational and supportive environment. Whitcliffe is a special community that I will miss greatly. Should you have queries regarding the changes please do not hesitate to contact me on [Rebecca.hesmondhalgh@sharemat.co.uk](mailto:Rebecca.hesmondhalgh@sharemat.co.uk)

We wish you all a lovely Christmas break and look forward to welcoming everyone back to Whitcliffe on Monday 5<sup>th</sup> January 2026. Miss Bland will write to you in the days ahead to share with you our arrangements for the new year and beyond.

Thank you again for your ongoing support and Merry Christmas!

A handwritten signature in black ink, appearing to read 'R. Hesmondhalgh'. The signature is fluid and cursive, with a large, sweeping flourish at the end.

Rebecca Hesmondhalgh  
Headteacher