

Together, we are proud to be our best



20th January 2026

Dear Parent/Carer,

Year 11 Information

As we enter the second full term of the academic year, we are writing to provide a further update around how we are supporting our Year 11 students through their final months at WMA. All Year 11 students have received this information in an Exam Launch assembly on Monday 19th January.

Mocks and Mock Results

Firstly, we would like to thank you for your support during the Year 11 mock examinations at the end of last term. We were very impressed with the attitude and behaviour the majority of our students displayed throughout this period and feel the experience has prepared them well for the summer examination series. As you are aware, any failure to follow JCQ regulations could result in disqualification from that qualification. All the guidelines are available on our website and we thank you for your continued support with ensuring that your child(ren) is/are familiar with them: [Whitcliffe Mount, A SHARE Academy - Exams](#)

Students are starting to receive feedback from their teachers, on their areas of strength and identifying where there is still work to be done in each subject. Staff are using the information collected from the mock exams to refine the curriculum plan for the remainder of the academic year. This will ensure there is sufficient opportunity for all students to close any gaps in their knowledge and understanding and achieve their personal best in their exams.

Our Year 11 students will receive their **mock examination results on 10th February 2026**. On this day, students will receive their mock grades and their most recent set of working at, predicted grades and attitude to learning grades. We will be happy to discuss this information, and other aspects of your child(ren)'s progress, with you at the **Year 11 Parents Evening on 26th February**. We will be in touch in the weeks ahead to share booking information with you.

We are aware that a handful of colleges may set interview dates before the 10th of February 2026. Should a student be required to share their predicted grades with a college at interview before that date then they can request that data, with evidence of their college interview, via email to joseph.loxam@sharemat.co.uk.



01274 851152



Whitcliffe Mount,
A SHARE Academy
Turnsteads Avenue, Cleckheaton,
West Yorkshire BD19 3AQ



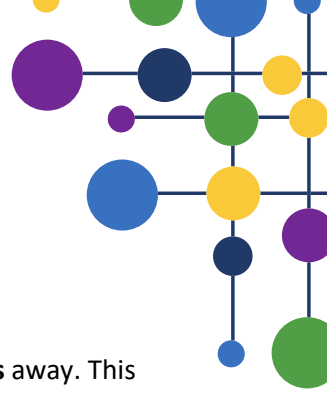
whitcliffe.office@sharemat.co.uk



www.whitcliffemount.co.uk

Valuing people, supporting personal best

Share Multi-Academy Trust, an exempt charity and a company limited by guarantee. Registered in England and Wales 07729878.
Head Office SHARE Multi-Academy Trust, c/o Shelley College, Huddersfield Road, Shelley, Huddersfield, HD8 8NL



Preparation for Final Year 11 Examinations

The **summer exam series starts on Tuesday 5th May 2026** and this is approximately **15 weeks** away. This provides plenty of time for students to develop their confidence and fill gaps to allow them to make further progress and improve on their mock grades. However, as I am sure you are aware, we would like to remind students that, should they not act upon the advice given and, instead, reduce their effort levels, their outcomes could be negatively affected. This is a time to commit to working hard at school and at home. We want everyone to succeed in reaching their full potential and achieve their personal best and we encourage all our students to continue to approach their lessons with a positive attitude, regularly communicate with their subject teachers, revise at home and act on their teachers' advice. We are confident that the students who do this will be rewarded with some excellent results in the summer. We remain very proud of our current year 11's and their attitude towards their learning journey.

We are continuing our support outside of the classroom, to ensure all our students feel confident and well prepared for each GCSE exam they are sitting. We are continuing to **offer Achieve sessions after school** and the programme can be viewed on our website here: [Whitcliffe Mount, A SHARE Academy - Learning Beyond the Classroom](#). We will be **offering revision sessions during February half term** as well as during the **Easter holidays**. Moreover, we will be offering additional Achieve+ sessions within the six-week exam window. More on these opportunities will be communicated in due course.

As an academy, we are committed to encouraging all students to achieve their full potential and benefit from all the opportunities we offer. To support Year 11's further with this, we will soon be launching a new initiative "passport to the prom", details of which will be provided in a letter later this half term.

Attendance and Punctuality

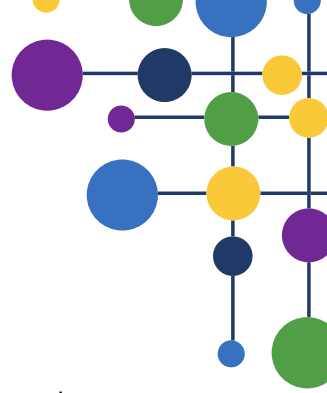
Whilst attendance and punctuality are always important at school, at this vital time in your child(ren)'s academic journey it is essential that all students attend, remain in school and are punctual. At this point in Year 11 every moment counts.

We also need our students to be ready to learn in every lesson and this includes arriving with the correct equipment:

All students are expected to bring a school bag (A4+ folder size) containing the following daily:

School Planner	Pencil case
Scientific calculator – Sharp WriteView EL-W531TL	Black ball point pens
Exercise books in accordance with the timetable	Green ball points pens
Pencil	Ruler
Pencil Sharpener	Rubber
Highlighter	Glue Stick

We thank you for your ongoing support with ensuring your child(ren) attend every day and arriving on time with the correct equipment.



GCSE Results Day

GCSE results will be available for collection from Whitcliffe Mount Academy on the morning of **20th August 2026** and we will communicate the arrangements for this nearer the time.

Further Support

Should you have any concerns from a pastoral perspective, please don't hesitate to contact the Year 11 Head of Year at Natasha.Donaldson@sharemat.co.uk.

Should you have any concerns of an academic nature, please contact myself helen.jeffrey@sharemat.co.uk or christopher.elstub@sharemat.co.uk.

Key Dates

Tuesday 10 th February 2026	Mock results
Thursday 26 th February 2026	Parents/Carers information evening
Tuesday 5 th May 2026	GCSE Exam Window starts
Wednesday 17 th June 2026	Final scheduled exam
Wednesday 24 th June 2026	Exam contingency day
Friday 19 th June 2026	Year 11 Prom (Information about venue/cost/eligibility to attend will follow)
Thursday 20 th August 2026	GCSE Results day

Thank you again for your continued support.

Yours faithfully,

Mrs H Jeffrey
Deputy Headteacher (Quality of Education)