

26th January 2026

Dear Parent/Carer,

Use of Mobile Phones in School

I write to inform you of the change in the school rule regarding **mobile phones and school bags**. Whilst as a school, we have always understood that children may need access to their phone to ensure that they are able to contact parents/carers, unfortunately, due to an increase in the negative way that phones have been used in school, the school's rule has now changed. This will remove any incidents of social media communication and/or distraction from learning due to regular notifications. The Government also recognise that this is a national picture and have released a report on this: [Strengthened guidance on mobile phones in schools](#).

As of **Monday 23rd February 2026**, all mobiles must be **switched off and placed in a school bag** before entering the building and must not be turned back on again until 3pm, **after leaving site**. Whilst we have decided not to ban mobile phones altogether, the way in which students are able to access their phone during the school day has now changed. **Your child has been informed of this change during assemblies and during form time**. This is also reflected in our Behaviour Policy, which remains on the website: [Behaviour Policy](#).

May I please inform you of the consequences the school will impose, should any student fail to meet the school's expectations. As of Monday 23rd February, any student whose phone is seen on display, **whether the phone is switched off or not, or on them**, the phone will be confiscated. The phone will be issued back to the student at the end of the school day, **if they hand it over at the first time of asking**. If they are seen with it for a second time, it will be confiscated and parent/carers will be asked to collect. If it occurs for a third time, it will remain in our safe for a week, until parent/carers collect it. We have not yet taken the decision to ban mobile phones completely and we do hope that we will not need to resort to banning phones altogether in the future. **We would also like to be explicitly clear phones must be in school bags and therefore if they do not have a school bag, they have a month to purchase one. We will issue a school bag to students who return after half term without one.**

This decision has not been taken lightly, and I write to ask for your support. Should your son/daughter need to contact you in an emergency during the school day, they will be allowed to use the school telephone at Student Reception to do this, during their break or lunchtime. If you need to contact your child/school in an emergency please call 01274 851152, leaving a voicemail if the lines are busy. You can also contact school by emailing: whitcliffe.office@sharemat.co.uk.



01274 851152



Whitcliffe Mount,
A SHARE Academy
Turnsteads Avenue, Cleckheaton,
West Yorkshire BD19 3AQ



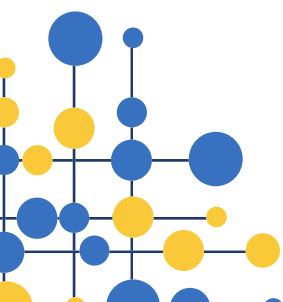
whitcliffe.office@sharemat.co.uk

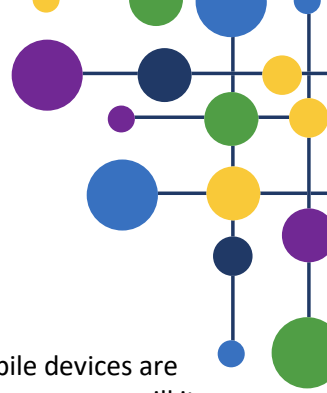


www.whitcliffemount.co.uk

Valuing people, supporting personal best

Share Multi-Academy Trust, an exempt charity and a company limited by guarantee. Registered in England and Wales 07729878.
Head Office SHARE Multi-Academy Trust, c/o Shelley College, Huddersfield Road, Shelley, Huddersfield, HD8 8NL





Our school environment is one that wants all students to strive towards their personal best. Mobile devices are not used in the classroom, and this change will not impact your child's learning or education in anyway nor will it disadvantage them. If possible, we ask that mobile phones are left at home. **For the first two weeks in half term 4, we will complete random checks on the entrance door to school and then random spot checks throughout the school day to keep this consistency.**

Whilst I appreciate that any change of a school rule may cause some disruption to some students, I wanted to take this opportunity to communicate this change with you, along with the rationale behind this change. The school Behaviour Policy and the way it is issued, will continue as it has done, and if necessary, serious consequences will be issued to students who do not adhere to the school's rules.

I would like to thank you in advance for your support.

Yours faithfully,

A handwritten signature in black ink, appearing to read 'K Bland'. The signature is fluid and cursive, with the first letters of the first and last names being capitalized and prominent.

Katie Bland
Deputy Headteacher