

23rd January 2026

Dear Parent(s)/Carer(s),

Year 11 Achieve + Holiday sessions

Thank you for your ongoing efforts in supporting your student(s) towards their upcoming GCSEs.

As mentioned in the letter sent earlier this week, to support Year 11 further with completing coursework or revising for exams, we will be running a series of sessions for them over February half term holiday.

The available sessions are listed below:

Date	Session Time	Subject
Monday 16 th February 2026	AM Session (9.30am – 12.00pm)	Engineering
		Textiles
		Food Technology
		3D Product
Monday 16 th February 2026	PM Session (12.30pm - 3.00pm)	Engineering
		Textiles
		Food Technology)
Tuesday 17 th February 2026	AM Session (9.30am – 12.00pm)	Maths
		Art
		Health and social
Tuesday 17 th February 2026	PM Session (12.30pm - 3.00pm)	Art
		Health and social
Wednesday 18 th February 2026	AM Session (9.30am – 12.00pm)	Trilogy science
		Geography section A



01274 851152



Whitcliffe Mount,
A SHARE Academy
Turnsteads Avenue, Cleckheaton,
West Yorkshire BD19 3AQ



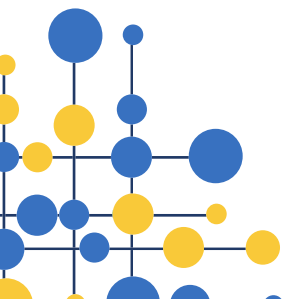
whitcliffe.office@sharemat.co.uk

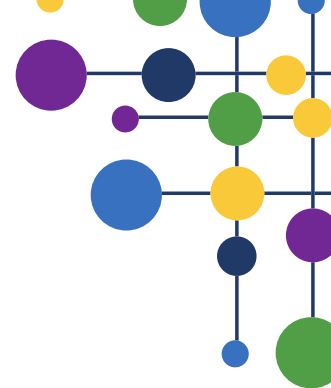


www.whitcliffemount.co.uk

Valuing people, supporting personal best

Share Multi-Academy Trust, an exempt charity and a company limited by guarantee. Registered in England and Wales 07729878.
Head Office SHARE Multi-Academy Trust, c/o Shelley College, Huddersfield Road, Shelley, Huddersfield, HD8 8NL





Wednesday 18 th February 2026	PM Session (12.30pm - 3.00pm)	Separate Sciences
Thursday 19 th February 2026	AM Session (9.30am – 12.00pm)	Enterprise and Marketing (Y11 only)
		Music
Thursday 19 th February 2026	PM Session (12.30pm - 3.00pm)	Enterprise and Marketing (Y10 only)
		Music
Friday 20 th February 2026	AM Session (9.30am – 12.00pm)	English Literature – 11W1 and 11M1
		Geography Section B

The English sessions on Friday morning are only for students in the classes listed (11W1 and 11M1.)

All other sessions are open to all the students who take that course but places are limited, so please sign up as early as possible to avoid missing the opportunity. Should any sessions become full, priority will be given to students who are not currently achieving their target grade. Should a place not be available, we will contact home to share this with the individuals affected. If you do not hear from us, assume your student has a place on their chosen session.

Students are not required to wear uniform, but other academy rules will apply as normal. To ensure these sessions have as much impact as possible, any students who do not meet the required behaviour expectations will be asked to leave.

For morning sessions, the academy doors will be open from 9.15am and for afternoon sessions the academy doors will open from 12:15pm. To avoid disruption once the sessions have started, students will not be allowed to join the session if they arrive 15 minutes after the indicated start time; please, therefore, ensure your student arrives promptly for the given session start time.

There will be no opportunity to purchase food or drink in school. Students should bring snacks, a drink and/or lunch with them.

Students attending a whole day session or both morning and afternoon sessions, will be allowed to leave site at lunchtime and expected to return for the start of the afternoon session at 12.30pm. Alternatively, they can remain in school and will be supervised in school over the 30-minute lunch break.

To confirm your child's attendance at the above sessions, please click on the link below and complete a short form or scan the QR code.



<https://forms.office.com/e/6KhbMJTgDM>

Please do not hesitate to contact school if you require any further information. Thank you again for your continued support.

Yours faithfully

A handwritten signature in grey ink, appearing to read 'J Waddington', positioned below the 'Yours faithfully' text.

Mr J Waddington
Associate Assistant Headteacher and Director of Science

