

12th February 2026

Dear Parents/Carers,

Year 9 Options Evening
Wednesday 4th March 2026

Further to our previous communication regarding the Year 9 Options process, I am writing to share important information about our upcoming **Options Evening on Wednesday 4th March, 6–8pm.**

In preparation for this event, **all students will have received information about their allocated pathway and taken part in a one-to-one discussion with a member of the Options Team** prior to the evening. During these meetings, students have been encouraged to think carefully about their interests, strengths, and aspirations, and to share their initial preferred choices ahead of the full selection process.

As part of Options Evening, we will be delivering a short presentation outlining the pathways available, key deadlines, and the support in place to help students make informed decisions for Key Stage 4. To ensure that all families can access the presentation comfortably, we are asking parents and carers to **book a presentation slot through the School Shop on Arbor.**

Tickets for the presentation are free and can be purchased via the school shop section of Arbor. If you do not currently have access to your Arbor Parent Portal and require log in details or further assistance, please contact the main office by email: Whitcliffe.office@sharemat.co.uk or by telephone on 01274 851152

After attending your chosen presentation slot, you and your child will be able to visit subject areas across the school. This will allow you to:

- Speak directly with subject teachers
- Explore course content and assessment requirements
- Ask any questions about the subjects your child may be considering
- Build on the discussions your child has already had with the Options Team



01274 851152



Whitcliffe Mount,
A SHARE Academy
Turnsteads Avenue, Cleckheaton,
West Yorkshire BD19 3AQ



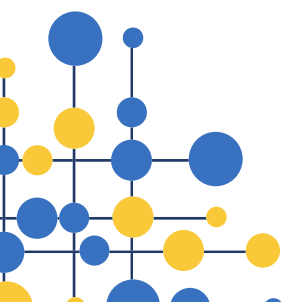
whitcliffe.office@sharemat.co.uk



www.whitcliffemount.co.uk

Valuing people, supporting personal best

Share Multi-Academy Trust, an exempt charity and a company limited by guarantee. Registered in England and Wales 07729878.
Head Office SHARE Multi-Academy Trust, c/o Shelley College, Huddersfield Road, Shelley, Huddersfield, HD8 8NL





This combination of the presentation, subject information, and prior guidance will ensure that students feel confident and well-supported in choosing the subjects that best suit their future goals.

If you experience any difficulties accessing Arbor or booking a slot, please contact the school office and a member of the team will be happy to help.

We look forward to welcoming you into school for this important milestone in your child's educational journey.

Yours faithfully,

A handwritten signature in black ink, appearing to read 'M Elstub', enclosed within a hand-drawn oval shape.

Mr Elstub
Assistant Headteacher – Quality of Education