

5th May 2026

Dear Parents and carers,

Y11 Exams Letter

On Monday 27th April, Year 11 students attended an assembly outlining the final details around their GCSE's in the summer exam series. We want everyone to succeed to their full potential, and we remain committed to supporting our students to ensure they feel confident and are well prepared for each GCSE they are sitting. We have been very impressed by their approach so far and we encourage all our students to continue to approach their lessons with a positive attitude, regularly communicate with their subject teachers, revise at home and act on their teachers' advice. We are confident that the students who continue to do this will be rewarded with some excellent results in the summer.

The Year 11's will be provided with our **Achieve+ timetable** which details the arrangements around study leave and what revision sessions are available around exams. A copy of this has been sent with this letter and is available on our website here: [GCSE Exam/Achieve+ Timetable May/June 2026](#)

As you are aware, some of the practical exams have been completed but the main written exam series commences on 5th May 2026.

- **All Year 11 students are expected in school full time up to and including Friday 5th June.**
- **Study leave starts on Monday 8th June.**
- **When students are in school (including for exams) they are expected to be in full uniform and behaviour expectations will apply as usual.**

Exam Timetables

All students have been provided with a printed copy of their personalised exam timetable. This includes their seat number which they need to know when they arrive for the exam. These are also available for you to access through the Arbor Parent App. To access this in the app, go to the "Examinations" section and, from there, you should be able to download the exam timetable as a PDF. You can also access the calendar which will display the student's schedule, including any exam entries. Please contact us if you need any assistance with this.

Revision Opportunities/Resources.

- We will be running revision sessions in an afternoon prior to an exam (3.15pm – 4pm) and morning revision / drop-ins on the day of an exam (8am – 8:30am)
 - These are detailed on the Achieve+ timetable and class teachers will confirm the detailed arrangements with the students in advance of the sessions.
- Where students have finished some courses (eg Art, 3D product, Drama) they will attend those lessons as timetabled. Other subjects are providing revision packs so they can revise independently in those lessons.



01274 851152



Whitcliffe Mount,
A SHARE Academy
Turnsteads Avenue, Cleckheaton,
West Yorkshire BD19 3AQ



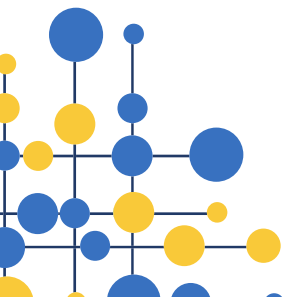
whitcliffe.office@sharemat.co.uk



www.whitcliffemount.co.uk

Valuing people, supporting personal best

Share Multi-Academy Trust, an exempt charity and a company limited by guarantee. Registered in England and Wales 07729878.
Head Office SHARE Multi-Academy Trust, c/o Shelley College, Huddersfield Road, Shelley, Huddersfield, HD8 8NL



- Where there are afternoon exams, we will be running masterclasses during P3 lessons for some subjects. These are mandatory for those who are requested to attend. Subject teachers will communicate who needs to attend these sessions.
- Further revision resources are available via our website (link above).
- There will be some revision sessions running in May half term – details to follow.

During Study Leave (8th – 16th June)

- Between 8th June and 16th June, students will attend only for examinations and/or for revision masterclasses as detailed in the timetable below.
- Some masterclasses during study leave will be optional, we will contact you nearer the time to ask students to sign up via a MS form.
- If students are in school over a lunchtime during study leave, we can offer lunch provision as usual, as well as provide lunches for those on Free School Meals. Students will be asked to confirm if lunch is required via an online form which will be sent out nearer the time.
- If there are students who wish to work in school during study leave, a quiet space will be provided. You will be asked to let us know in advance if you wish to use this facility.

Exam timings

- All morning examinations start at **9.00am** and afternoon exams start at **1.00pm** – unless otherwise stated.
- Students must be in school for **8:30am** for a morning examination and **12:30pm** for an afternoon examination so that registration has taken place and students are in their correct seats ready for a 9.00am / 1.00pm start.
- This is essential as timings are set by the exam boards. Late students cannot be permitted.

Further Examination Details and Regulations

- Students must follow the JCQ (Joint Council of Qualifications) rules and regulations in all examinations.
- All students have received the JCQ information for candidates booklet via email and on their back of their individual timetables, which details the rules and regulations that are expected to be followed in the exam hall. These expectations were reshared on Monday in assembly. The document is also available on the school website [Whitcliffe Mount, A SHARE Academy - Exams](#) Please support us in ensuring the students are familiar with these expectations.
- Any behaviour that contravenes these rules could result in disqualification and loss of mark for the exam, please ensure that your child is aware of this document and does not bring anything into the hall that could constitute malpractice.
- Please ensure that your child is fully prepared and arrives at each examination with the necessary equipment. Basic equipment includes black pen(s), pencil, ruler, sharpener, calculator, eraser and any equipment specified by the subject teacher.
- They may have a water bottle in the exam but these must be completely clear, with no printing or labels.
- If your child has Access Arrangements, they will receive the appropriate support throughout their exams.

GCSE Results Day

GCSE results will be available for collection from Whitcliffe Mount on the morning of **Thursday 20th August 2026** and we will communicate the arrangements for this nearer the time.



GCSE Digital Results App – Important Information for Parents

The government has launched a new **Education Record App**, which allows students to securely access their GCSE qualifications digitally and share them with colleges and employers without needing their paper certificates.

To use the app, students must be **verified by a teacher** during registration. From **29 April 2026**, students who wish to register (which we recommend) will be allowed to **turn their phones on during morning Form Time** to scan their personal QR code and be verified by their **PD Tutor**.

To take part, students must download the app at home before coming into school:

- Search for **“Education Record App”** in the App Store or Google Play
- Download and set up the app ready for verification

Google Play:



Apple Store:



GCSE results will still be **collected in person on results day in August as normal**. We are advised that digital results will not appear in the app until **after lunchtime**, allowing students to enjoy receiving their results with friends in the morning.

Further Support

Should you have any concerns from a pastoral perspective, please don't hesitate to contact the Year 11 Head of Year at Natasha.Donaldson@sharemat.co.uk.

Should you have any concerns of an academic nature, please contact myself at helen.jeffrey@sharemat.co.uk or christopher.elstub@sharemat.co.uk

Yours faithfully,

Mrs H Jeffrey
Deputy Headteacher – Quality of Education