

4<sup>th</sup> October 2023

Dear Parent/Carer

**Year 7 Cinderella Pantomime theatre trip**  
**14<sup>th</sup> December 2023**

Whitcliffe Mount Academy strive to enrich our students' lives and provide opportunities and experiences that they will cherish and remember for a lifetime. Therefore, we would like to take our year 7 students to the theatre to see the Pantomime at the Bradford Alhambra and this year, it is Cinderella.

The cost of return coach to the theatre in Bradford and a ticket to see the show will be **£20** per student. The full amount of will be required by **Monday 16<sup>th</sup> October 2023**. Should you have concerns regarding meeting the payment deadline and/or require assistance with payment, please contact Miss Lenk confidentially, on [Rebecca.lenk@sharemat.co.uk](mailto:Rebecca.lenk@sharemat.co.uk). The method of payment is through ParentPay, **all students who wish to attend must consent via ParentPay in order to complete their medical information and emergency contact details**. If you do not have a ParentPay account and require log in details or further advice on ParentPay, please contact the Main Office by email on [Whitcliffe.office@sharemat.co.uk](mailto:Whitcliffe.office@sharemat.co.uk) or telephone on 01274 851152.

**Please ensure that you complete the emergency contact details and medical information questions on ParentPay.** Without these details you will not be able to proceed through to make your payment. **If you are paying using a barcoded letter, please return your emergency contact details and medical information questions to the school office with your receipt attached.**

The coach will depart from Whitcliffe Mount at 13:00 with students expected to be in full school uniform. The show starts at 14:30 and finishes at 16:30. We hope to back in the school carpark at approximately 17:00.

**Proposed Itinerary**

12:30	Students to have early lunch
13:00	Coach to depart from the front of WMA
13:45	Approximate arrival at the theatre
14:30 – 16:30	<b>CINDERELLA!</b>
16:35	Coach to depart Bradford Alhambra
17:15	Approximate arrival back at WMA



01274 851152



Whitcliffe Mount,  
A SHARE Academy  
Turnsteads Avenue, Cleckheaton,  
West Yorkshire BD19 3AQ



[office@whitcliffemount.co.uk](mailto:office@whitcliffemount.co.uk)

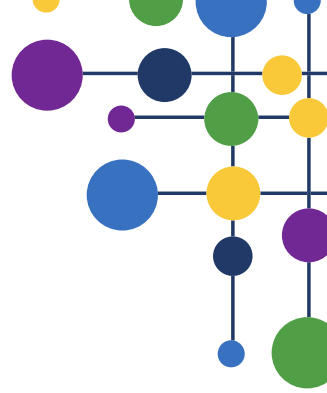


[www.whitcliffemount.co.uk](http://www.whitcliffemount.co.uk)

Valuing people, supporting personal best

**Share Multi-Academy Trust**, an exempt charity and a company limited by guarantee. Registered in England and Wales 07729878.  
**Head Office** SHARE Multi-Academy Trust, c/o Shelley College, Huddersfield Road, Shelley, Huddersfield, HD8 8NL





The visit is important to the development of the students' exploration of the arts and their knowledge of the arts industry. We would therefore encourage every student to attend. We reserve the right to withdraw students from the visit if there are any behaviour or safety concerns, which may result in the loss of any money already paid.

Yours faithfully,

Miss R Lenk  
Deputy Director of Learning Performance