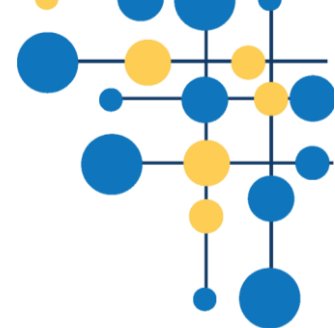


Whitcliffe Mount Academy

Prospectus September 2023



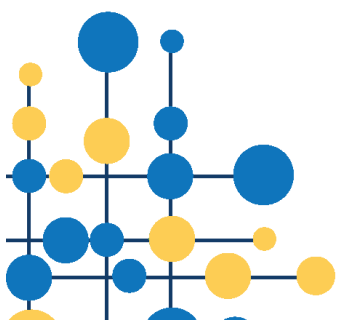


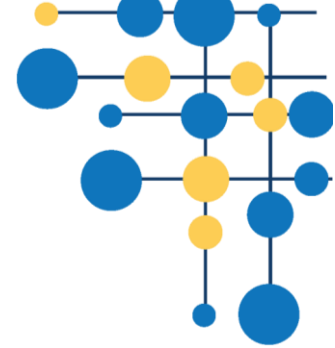
Contents

| | |
|---|----|
| Message from Rebecca Hesmondhalgh - Headteacher | 3 |
| We are Whitcliffe | 4 |
| Quality of Education | 5 |
| Curriculum..... | 5 |
| Reading | 7 |
| Enrichment Journey | 8 |
| Student Support..... | 10 |
| Safeguarding | 11 |
| School Uniform, PE Kit and Equipment..... | 12 |
| The Academy Day | 14 |
| Catering..... | 15 |
| Applying for a Place at Whitcliffe Mount Academy..... | 16 |
| Oversubscription Criteria..... | 16 |

Whitcliffe Mount, A SHARE Academy
Headteacher – Rebecca Hesmondhalgh
Turnsteads Avenue, Cleckheaton,
West Yorkshire, BD19 3AQ
Tel: 01274 851152
Fax: 01274 853050

Email: whitcliffe.office@sharemat.co.uk
Website: www.whitcliffemount.co.uk
Follow us on Twitter @WMount





Message from Rebecca Hesmondhalgh - Headteacher

'This school continues to be good.' Ofsted September 2017

I am delighted that you are considering Whitcliffe Mount School for your child's secondary education. Whitcliffe Mount in Cleckheaton has a long history of providing excellent educational opportunities for the local community. Our new ethos of "Together, we are proud to be our best" describes our overarching aim to create a proud school community who feel safe and happy at school, and who learn, develop and grow together within a positive and aspirational school environment. Emphasis is placed on ensuring students feel safe and enjoy their time at school so that they can achieve highly and celebrate their successes with their peers.

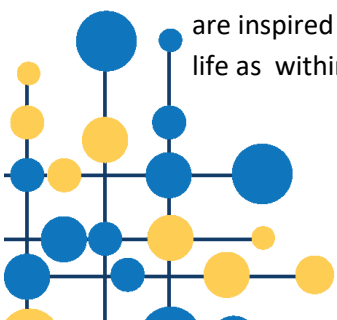
September 2017 saw the start of a new era for the school with the opening of a brand new, purpose-built school building and sports facilities. It is true that the quality of a school depends on far more than just bricks and mortar but it is also important that a modern school building actively supports high quality teaching and learning and promotes a positive educational experience. Our new building, with its state-of-the-art facilities and specially designed layout certainly does that.

We expect high standards of achievement, behaviour, attendance, punctuality, and appearance from all our students. All students are expected to follow our school 'Belong' expectations: Be safe, respectful and listen to others; engage in learning; look after our environment; own the choices that you make; never give up in achieving your personal best and great pride in our uniform and community. We believe that Whitcliffe Mount provides the ideal environment for our students to reach their potential in all areas. Achievements are celebrated by rewarding hard work and positive attitudes towards learning and behaviour, through our rewards revolution programme which includes individual and team points, postcards, certificates, assemblies and celebration events. Students receive cumulative rewards via termly award days selected by them and daily recognition through our ClassCharts app which can be viewed by both parents and students.

Alongside a broad, balanced and challenging curriculum, we actively challenge students to develop a core set of 'Character Development' skills which will support them through their studies and prepare them for future progression in to further education and employment. Students are also guaranteed further opportunities to broaden their horizons and sense of ambition through our careers journey guarantee which ensures students benefit from a fully rounded and aspirational educational experience.

Whitcliffe Mount has a very strong tradition of enrichment and curriculum support activities with particular strengths in both sport and performing arts, where students develop confidence and independent learning skills. Alongside this we have an extensive Student Leadership Academy where opportunities to further develop our 'Character Development' skills are undertaken.

It continues to be a privilege to be Headteacher at Whitcliffe Mount, I hope you will feel as passionate about Whitcliffe Mount after you have attended our Open Evening as we do. I hope you are inspired and allow us the privilege of guiding your children through the next stage of the school life as within our wonderful school community.





We are Whitcliffe

'Together, we are proud to be our best' runs through everything we do. We focus on developing a strong sense of community through helping everyone to be PROUD and to BELONG. Students develop personal characteristics, values and traits that help make them good, active citizens and develop skills and knowledge to raise their aspirations as a team and as individuals.

SHARE Multi Academy Trust Values

In September 2022 we were fortunate to join SHARE Multi Academy Trust who are a small, friendly partnership currently consisting of secondary and four primary schools in West Yorkshire.

SHARE Multi Academy Trust summarise our core values as 'Valuing People, Supporting Personal Best'.

It means we want every one of our pupils and members of staff to enjoy coming to our schools and for all of us to try our very best in everything we do. Our schools should be safe, positive environments where every pupil is encouraged to achieve their personal potential and helped to overcome obstacles.

We believe that helping people feel valued increases the chances of them achieving their personal best; the highest standard we can expect anyone to achieve. This requires us to set ambitious goals for every pupil and to help them to achieve them.

We aim to help everybody gain the knowledge, skills and habits that can lead to a happy and successful life.

"The leadership team has maintained the good quality of education in the school since the last inspection."

Ofsted September 2017



Quality of Education

At Whitcliffe Mount we consistently aim to raise aspirations and the standard of education of all our students by offering them the highest quality teaching at all times. At Whitcliffe Mount we teach a broad, balanced and ambitious curriculum at both KS3 and KS4. We aim to ensure that all students reach or exceed their potential. Students follow a two-week timetable of fifty periods and have a twenty-minute personal development time each day. We believe in the concept of lifelong learning and the idea that learning should be a rewarding and enjoyable experience for everyone. Our teaching aims to equip students with the skills, knowledge and understanding necessary to be able to make informed choices about their lives.

Our highly trained staff enjoy a rigorous programme of continued professional development allowing them to constantly improve as practitioners and to stay abreast of developments and innovations. We ensure best practice is consistent across every lesson and that all our students are able to access engaging and challenging lessons, every lesson. We regularly set aside time to review the learning that is taking place in our school; we listen to our students, parents/carers and teaching staff and welcome feedback to proactively ensure students are receiving the best possible experience throughout their entire school career.

“The school has thought carefully about the curriculum.”

Ofsted September 2017

Curriculum

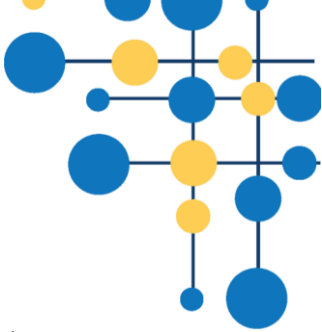
Our high expectations, for all our students, ensure they achieve their academic, social and personal best during their time at Whitcliffe Mount. The delivery of the curriculum by well qualified, specialist teachers provides students with the opportunity to enjoy learning, achieve their potential and celebrate success. The varied curriculum caters for the needs of all students, and teaching staff are well aware of students’ needs. Strategies are put in place to ensure all students can access their learning and achieve their potential.

The Key Stage 3 curriculum provides students with an opportunity to experience a wide range of subjects. By the end of Year 9, students are in an excellent position to make choices about what they want to study in Year 10 and 11. The Key stage 3 curriculum encourages the development of our ‘Character Development’ goals: Resilience, Learn Eagerly, Respect, Active Citizenship, and Integrity among others. Students currently study the following subjects:

Year 7 – Art, Design and Technology, English, Geography, History, Computing, Mathematics, Modern Foreign Languages, Music, Learning for Life, Physical Education, Religious Studies and Science.

Year 8 and 9 - Art, Drama, Design and Technology, English, Geography, History, Computing, Mathematics, Modern Foreign Languages, Music, Learning for Life, Physical Education, Religious Studies and Science.

In Key Stage 4, students continue to follow a broad, balanced and inclusive curriculum. Through our flexible and personalised routes, students are guided towards a curriculum which will enable them to achieve their full potential. Advice is given to individual students and their parents/carers before the option choices are made at the end of Year 9. All students in Key Stage 4 study the core subjects: English Language and Literature, Maths, Science, Core PE, Learning for Life. Additional Subjects Currently Offered at Key Stage 4:



Art and Design
Business Studies
Computing
D & T (3D Product or Textiles)
Engineering
Food Nutrition and Preparation
French
Geography

Health and Social Care
History
Music/Audio Production
Performing Arts – Acting/Musical Theatre
Prince's Trust
Spanish
Sports Science
Statistics

Relationships & Sex Education (RSE) is an essential part of the National Curriculum that all students have to study, we deliver RSE through the Learning for Life curriculum. RSE is lifelong learning about physical, sexual, moral and emotional development. It is about the understanding of the importance of stable and loving relationships, respect, love and care, for family life. This curriculum is subject to annual review.

We have a rigorous programme of monitoring students' attainment and progress. In key stage 4, students are given aspirational targets for each subject, based on prior performance. In key stage 3, 'KS2 Scaled Scores' (if available), base line assessments and additional primary school data are used to set expectations for students. Teachers assess students using the terms: Mastering, Securing, Developing and Emerging. These terms indicate how students in Year 7 to 9 are developing their understanding of the curriculum.

Each year group has parent/carer information evenings, attainment reports, and these are complimented by additional information evenings. Students who make the most progress are invited to our annual Awards Evening where they are rewarded for their positive attitudes to learning.

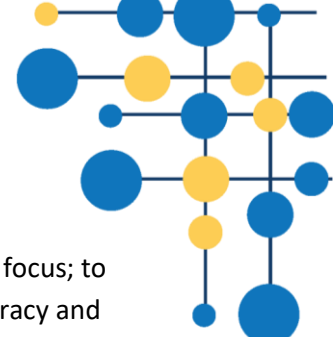
It is important that students leave Whitcliffe Mount with the confident and secure literacy skills they need to thrive as adults. The literacy ability of every student is monitored very closely at Whitcliffe Mount, especially at key stage 3. Literacy and numeracy skills are taught within the curriculum and students are given extra support if they require it.

Staff have high expectations, and we encourage all students, whatever their ability and background, to make excellent progress. We use our pupil premium funding to enhance and support the achievement of disadvantaged students. Students with Special Educational Needs are monitored closely by our SENDCO, and guided and supported by our highly skilled team of Educational Teaching Assistants. More able students are provided with a wealth of opportunities to enrich and extend their learning, both inside and outside the classroom, and all students are encouraged to aspire to continue their education post 16.

“Pupils who have special educational needs and/or disabilities say that they feel very safe and well supported.”

Ofsted September 2017





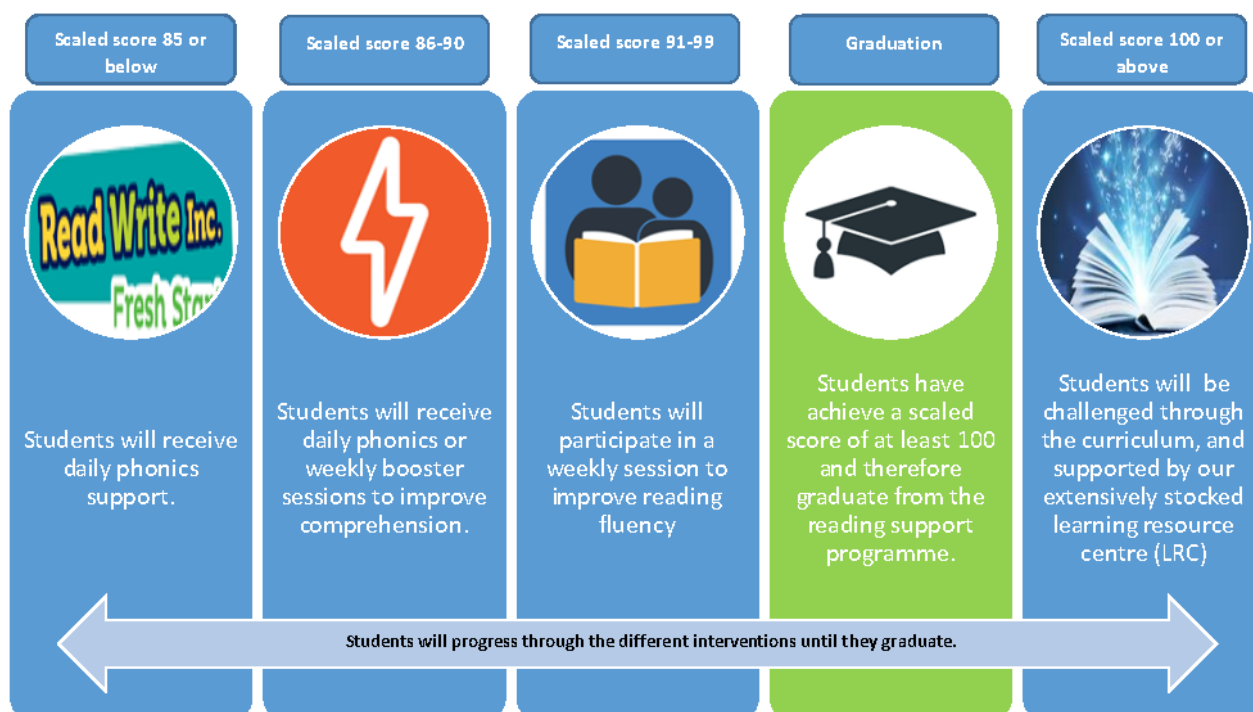
Reading

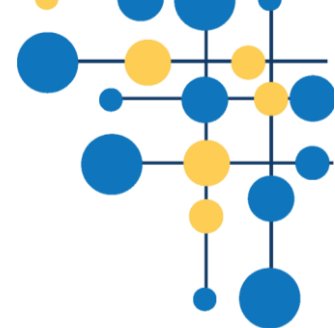
There are so many benefits of reading, from gaining valuable knowledge; improving your focus; to improving your memory and having the ability to empathise with others around you. Literacy and reading enable you to develop the skills to do this. Reading has a significant impact on your ability to progress and access all aspects of your life. Therefore, a key focus, at Whitcliffe Mount, is supporting students to be able to access every lesson and develop their confidence and fluency in reading.

We are developing our reading support within the school across all year groups. Reading is promoted in all curriculum areas and staff are eager to provide students with the ability to further challenge and embed their reading, writing and spoken skills throughout their learning. This will be done through reading and speaking aloud in class; articulating their ideas in class discussion and encouraging students to engage fully in opportunities to read whenever they are presented to them.

As a school, we assess students using the NRG T reading test in September and intervene where required. Through research and training we have staff who are able to provide more intensive support to students who require this. This includes Ruth Miskin's Fresh Start for phonic support, Reciprocal Reading and Reading Friends for students who need to focus on grammar and fluency support. IDL is another programme the school uses to support students with their reading and spelling. This alongside our focus on reading across the curriculum enables students to progress in all their learning and develop a love for reading and learning.

Students being supported on our reading programme will be retested termly until they graduate with a scaled score of 100. A score of 100 means a student is reading at their chronological age.





Enrichment Journey

Whitcliffe Mount prides itself on the range of opportunities it provides for students outside the classroom. These opportunities generally fall in to two categories: Bringing topics being studied in the classroom to life and enriching the learning experience for students.

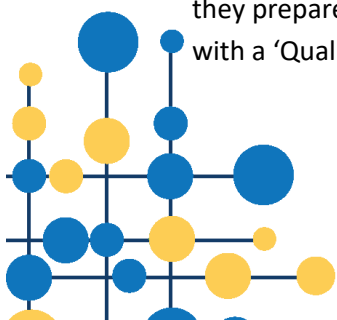
English runs a variety of trips to enhance students' appreciation of literature texts. The performance faculty offers a huge range of opportunities from the more traditional through to new and more progressive activities. In physical education, the school has a fantastic reputation both locally and regionally for successes on the sports field. This is complemented with a bespoke PE enrichment timetable. Sports tours and skiing/snowboarding have also been regularly organised. In performing arts, our students continually wow audiences in our major school productions.

Students have the opportunity to gain experience and qualifications in Sports Leadership through the national recognised Sports Leaders UK courses and our successful Rugby Academy. In humanities, students visit Fountains Abbey and Holderness to support their learning and residential visits to Poland and Iceland/Italy have also been organised in recent years. Modern foreign languages (MFL) have organised a Spanish trip to Barcelona. Students in art, design and technology have the opportunity to showcase their work via exhibitions.

Through the SMSC faculty (social, moral, spiritual and cultural), students broaden their understanding of a number of key and current topics. The 'Prison, Me No Way' day raises awareness about the causes and consequences of crime. We have a number of visiting speakers who speak to students about road safety, drugs/alcohol awareness, mental health, anti-bullying and online safety. In more recent years, our after-school LGBTQ+ club raises the awareness of current issues and gives students the opportunity to speak openly without being judged. Students also engage with motivational speakers, whose life stories are shared to raise the aspirations of our students. The LRC (learning resource centre) is always a hive of activity. They run a variety of homework, craft, reading and catch-up clubs and the list goes on!

Enrichment opportunities for students also include, whole school ethos trips, team-building activity days for Year 7 and 'We Are Whitcliffe' activities throughout the year which give students the chance to demonstrate their creative and entrepreneurial skills. There are also many competitions organised via our House System. The school supports many local and national charities, raising substantial amounts of money. Our biggest fundraising event is our biennial whole school Sponsored Walk.

Students in all year groups, are given information, guidance and opportunities in relation to careers. In Years 7, 8 and 9, students participate in 'Enterprise Days' where they interact with volunteers from the business world. Students also participate in mock interviews and attend careers fairs as they prepare for the next stage of their lives. As a school, we have also successfully been accredited with a 'Quality Standard in Career' achieving all 8 Gatsby Benchmarks.





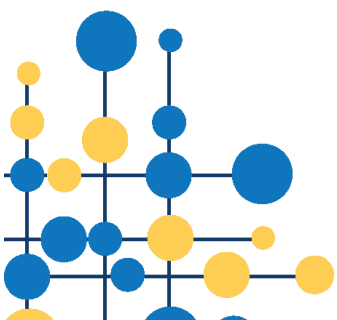
The Duke of Edinburgh's Award scheme continues to thrive with over 100 students enrolling in recent years. The award requires students to be self-sufficient and spend a night camping in the countryside. Where possible, we offer the opportunity for students to obtain both the bronze and silver awards. The students cover a number of areas during the award such as volunteering, taking part in a physical challenge and learning a new skill. The award is a brilliant learning experience and provides a renowned and valuable qualification for future endeavours.

As a school, we see these opportunities as invaluable elements in the personal development of our students; their physical and mental wellbeing and their knowledge and understanding of the world around them. We strive to ensure all students have the opportunity to benefit from enrichment and extracurricular activities.



“Pupils enjoy opportunities to study, for example, performing arts, art music and engineering.”

Ofsted September 2017





Student Support

It is very important to us that parents/carers feel confident that their children will settle at Whitcliffe Mount quickly and that they are happy, safe and successful whilst in our care. This is of paramount importance and we strive to work closely with families to ensure that we work together to support you and your child.

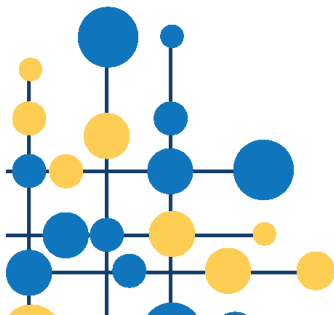
The formal transition process starts well over a year in advance of students coming to us. During their final year at primary school, there will be a number of opportunities for your child to meet our staff and to spend time with us at Whitcliffe Mount. With the help of primary schools, we identify any children who may need additional help during the transition period and ensure that they are supported fully.

During the term prior to your child starting at Whitcliffe Mount, parents/carers will get an opportunity to look around the school and will be invited to attend an information evening before the September start. We feel it is important that we meet with parents/carers before students are taken on roll - even if there are older siblings already with us. Our school website contains further information about our school, with a separate parent/carer section.

When your child arrives at Whitcliffe Mount, he/she will be placed in a form in one of five Houses: Clough, Grylls, Mowat, Wadsworth or Whiteley. Each form has a personal development tutor, who is the person to whom your child will turn for guidance, and who will be the first point of contact with parents/carers. During the first term the school holds an Information Evening so parents/carers and students can discuss the 'settling in period' and ensure that any issues arising can be quickly resolved. Each year group has a Head of Year, who will support your child as they progress through the school.

At Whitcliffe Mount we have a successful Student Council where students have a voice. Representatives are elected to represent their forms and discuss issues relevant to student life, e.g. suggesting and implementing fundraising initiatives to support chosen charities. In addition to this, at Whitcliffe Mount we believe that students should be given a wide range of opportunities to develop and practice leadership skills in preparation for life beyond school. We believe that every student should have a voice and our Student Leadership Academy aims to provide opportunities for this. The Academy is led by two Head Students, with subgroups of students allocated different roles within school including, Prefects, Ambassadors, Transition Leaders, Anti-bullying Ambassadors, Eco-committee members, Careers Ambassadors, and Reading Leaders.

Our aim is to develop a successful three-way partnership between the child, parents/carers and school. We work hard to build positive relationships with families and ensure all children are happy, safe and have everything they need to achieve their personal best at Whitcliffe Mount.





“The vast majority of parents who responded to the online questionnaire, Parent View, say that their child is safe at school, and this is supported by what pupils and staff say.”

Ofsted September 2017

Safeguarding

Our first priority is that ALL students feel safe and happy in our school.

We have an extensive Safeguarding & Child Protection Policy & Procedure which you can view by here: [Safeguarding Policy](#)

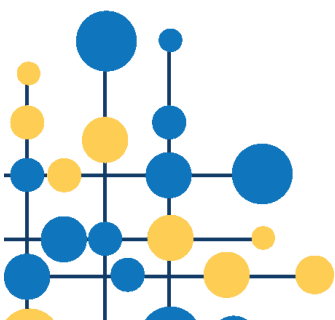
At Whitcliffe Mount we are committed to safeguarding and promoting the welfare of children and we require all staff, volunteers and visitors to share this commitment. We acknowledge that safeguarding is everyone’s responsibility and all of our staff are trained to be vigilant and aware of the signs and indicators of abuse. We work with students to develop trusting, consistent and professional relationships. We promote early help processes and aim to identify any difficulties or concerns early in order to act preventatively. We will always provide support and advice for families and parents/carers, whilst acting in the best interests of the student.

Safeguarding also includes ensuring we follow safe working practices and provide a secure learning environment for our students and staff.

Pupils are aware of staff within the academy who they can talk to regarding any safeguarding concerns. Staff with safeguarding responsibility can be found on our [Safeguarding](#) page on the website.

“A typical comment from parents is that children feel looked after, happy and safe.”

Ofsted September 2017



School Uniform, PE Kit and Equipment

School Uniform

- Black School Logo Blazer. Purchased from our uniform suppliers.
- Tailored, Plain Black Traditional School Trousers
- Tailored, Plain Black, Straight or Pleated School Skirt, worn to fingertip length
- White Short or Long-sleeved School Shirt with Collar, worn tucked in and top button fastened
- Black School Tie, with year group specific coloured Stripe. Purchased from our uniform suppliers
- Black School Shoes
 - Footwear must be plain black and sensible that can be polished or wiped clean
 - No logos or sports labels on shoes. No canvas or rubber toe pumps, Vans, Converse, trainers of any kind to be worn
 - Students with a medical condition require a medical note in order to wear alternative footwear. This footwear still needs to be plain black without logos



Optional Uniform

- Black V-necked School Jumper with Logo. These are only required in cooler weather and worn under the blazer

Blazers

- When travelling to and from school, normal Whitcliffe Mount School uniform must be worn
- Blazers must be worn at all times around school but may be removed in lessons if permission is granted by the teacher
- The blazer is obligatory, the jumper is optional. Jumpers are only required in cooler weather and are worn under the blazer. In warm weather the jumper should be removed, not the blazer. No other jumper or cardigan is acceptable



School Ties

Year Group Specific



Ties are to be worn at all times with the school uniform. They are clip on and will be worn on the top button of a fastened shirt.

Each year group will have their own colour stripe tie which will stay with them throughout their time at Whitcliffe Mount.



PE Kit

- **WMA PE top** - Navy round neck sports top (short sleeved) with WMA logo.
- **Tracksuit bottoms** - Plain navy slim leg tracksuit bottoms (no logo)
- **Leggings** - Plain navy leggings (no logo)
- **Shorts** - Plain navy shorts (no logo)
- **Sports socks** - Plain navy football socks
- **Sports trainers** – Any
- **Studded Boots** – Any studded boots suitable for Rugby / Football



Option PE Kit

- **WMA PE ½ zip training top** - ½ zip training top (long sleeved) with WMA logo
- **WMA PE sports rain jacket** - Navy sports rain jacket with WMA logo

Equipment list

Each student should have the following equipment;

- | | |
|---|---|
| <ul style="list-style-type: none">• School bag• Planner (first provided by school)• Pencil case• 2x black pens• 2 x green pens• HB pencils• Glue stick• Ruler• Pencil sharpener | <ul style="list-style-type: none">• Highlighters• Scientific calculator• Exercise books |
|---|---|

Useful to have but not essential;

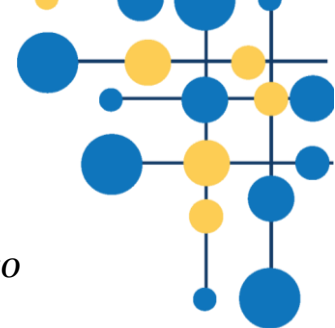
- Pocket dictionary
- Bi-Lingual dictionary

General

- School bags must be of a minimum size to hold an A4 folder. An additional lightweight bag will be needed to hold PE kit and outdoor coats
- Footwear must be plain black, leather, sensible shoes - shoes with logos or sports labels/badges are not acceptable; (such as converse/vans/gazelles, etc)
- Socks must be plain and dark in colour. Feet must be covered
- Make-up must be discrete. Nail varnish must be discrete. Fingernails must be short and safe
- Hair must be natural in colour and style
- Jewellery is restricted to one small stud per ear and a watch (ear studs **need** to be removed for PE lessons). Other piercings are considered unsafe and are not acceptable. These items will be confiscated if seen and students will be sanctioned in line with policy.

If a student arrives at school incorrectly dressed, parent/carer will be contacted by a member of staff and will be asked to borrow spare uniform from the student support team or a parent/carer will be contacted to bring the appropriate uniform to school.





“Everyone is working for the best outcomes for pupils, while also providing for their well-being.”

Ofsted September 2017

The Academy Day

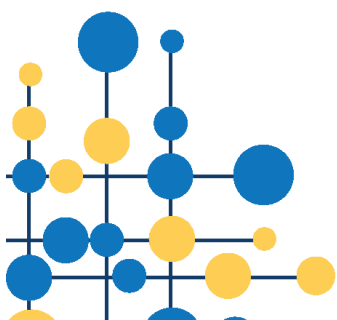
| | |
|------------------------------|---|
| 8.00am | School open to students |
| 8.30am - 8.35am | 5 min movement |
| 8.35am – 9.05am (30 minutes) | Personal Development* |
| 9.05am – 10.05am | Period 1* |
| 10.05am – 11.05am | Period 2* |
| 11.05am – 11.25am | Break |
| 11.25am – 11.30am | 5 minute movement time |
| 11.30am – 12.30pm | Period 3* |
| 12.30pm – 1.00pm | Lunch 1 – Y8/10/11 (plus 5 min movement at 12.55pm) |
| 12.30pm – 1.30pm | Period 4 – Y7/9* |
| 1.30pm – 2pm | Lunch 2 – Y7/9 (plus 5 min movement at 1.55pm) |
| 1pm – 2pm | Period 4 – Y8/10/11* |
| 2pm – 3pm | Period 5 |

*A warning bell will ring 5 minutes before the end of each lesson. Students then have 5 minutes to get to their next lesson before the bell will ring again to signify the start of the next lesson.

Please note: This is the current 2023 structure of the day and may be subject to change.

“Parents are particularly complimentary about the transition for pupils who have recently started Year 7.”

Ofsted September 2017



Catering

Our lunchtime catering is provided by Kirklees Catering Service. Kirklees Catering Service is the multi award-winning catering supplier to schools across Kirklees and the wider region. A wide choice of food and drink is on sale at both break and lunchtime.

Sample Menus, showing the food that students are able to purchase each day, with current costings (subject to change) can be seen below. The Learning Resource Centre (LRC) is available before school, from 8am, at breaktime, lunchtime and until 16:00 (15:30 on Fridays) for students in addition to our restaurant, and outdoor space. Our Inspire space (for SEND students) is available at breaktime and lunchtime.

eat.in

| MONDAY | TUESDAY | WEDNESDAY | THURSDAY | FRIDAY |
|---|-----------------------------|--|---------------------------------|-------------------------------|
| Loaded Wedges | Pizzeria | Chef's One Pot Wonder | Hot Filled Wraps | Pan Asian |
| Seasoned Wedges with a Topping of the Day & a Cheese Crust | Healthy Topped Pizzas | Chef's Special of the day | A Selection of Hot Filled Wraps | Authentic Asian Dishes |
| Served with Crispy Salad & Coleslaw | Served with Seasonal Salad | | Served with Authentic Sides | Served with Traditional Sides |
| Home Style British Classics | Taste of the Orient | All American Burgers | Taste of Italy | Fish Friday |
| Traditional British Classics | Authentic Oriental Dishes | A Selection of Loaded Burgers | Authentic Italian Dishes | Catch of the Day |
| Served with Traditional Sides | Served with Authentic Sides | Served with Seasoned Wedges & Coleslaw | Served with Italian Sides | Served with Chips & Sides |
| <p>A selection of Grab & Go favourites, changing daily including.....</p> <p>Chicago Town Pizzas, Pasta, Jacket Potatoes, Hot Wraps and Paninis</p> | | | | |
| <p>A range of freshly prepared sandwiches, wraps, baguettes and bagels available from our deli bar, along with boxed salads and deli pots.</p> | | | | |
| <p>Available Daily A selection of traditional hot desserts, fresh fruit pots, yoghurts and healthy snacks.</p> | | | | |

eat.in

| BREAKFAST/MORNING BREAK | | HOME BAKING & DESSERTS | |
|---|-------|-------------------------|-------|
| | Price | | Price |
| Toast & Butter | £0.35 | Biscuits | £0.70 |
| Toasted Current T Cake | £0.60 | Flapjack | £0.80 |
| Toasted Muffin | £0.70 | Assorted Cakes | £0.85 |
| Toasted Bagel | £0.75 | Fruit or Topped Muffins | £0.85 |
| Waffles | £0.90 | | |
| Crumpet | £0.50 | | |
| PROMOTIONS & SPECIALITIES | | | |
| <p>LOOK OUT FOR</p> <p>FROM £2.25 MEAL DEAL £2.70</p> <p>WITH SPECIAL OFFERS & PROMOTIONS</p> | | | |
| EAT-EXPRESS | | DRINKS | |
| | Price | | Price |
| Main Meal | £2.25 | Harrogate Spa 500ml | £0.75 |
| Lunch Meal Deal | £2.70 | Harrogate Spa 330ml | £0.65 |
| Chicago Town Pizza | £1.25 | Juice Burst | £1.10 |
| Pasta with Sauce | £2.15 | Viva Plain Milk | £0.70 |
| Jacket Potato | £1.00 | Viva Flavoured Milk | £0.75 |
| Filled Jacket Potato | £2.15 | Tea | £0.90 |
| Baked Beans | £0.60 | Coffee | £0.95 |
| Hot Dessert | £1.15 | Hot Chocolate | £1.00 |
| EAT-FRESH | | | |
| | Price | | |
| Filled Baguettes | £2.15 | | |
| Hot Filled Baguettes | £2.25 | | |
| Assorted Filled Wraps | £2.20 | | |
| Pasta Salad Pots | £1.75 | | |
| Pasta Pots with Protein | £1.75 | | |



Applying for a Place at Whitcliffe Mount Academy

You can apply online for a school place in September 2024, between 1 September 2023 and 31 October 2023. If you apply after this date, it can severely reduce your chances of obtaining a place at your preferred school.

To apply for a place at Whitcliffe Mount parents/carers need to follow the link below:

<http://www.kirklees.gov.uk/beta/admissions/apply-secondary-school-place.aspx>

All correspondence relating to applications will be via email from Kirklees Admissions.

If you do not live in Kirklees (i.e. you do not pay council tax to Kirklees Council) applications must be made through your home local authority, the local authority you pay your council tax to.

Parents/carers of children currently in Year 6 who have completed the application but did not name Whitcliffe Mount and who now wish to apply for a place in Year 7 should inform school admissions at Kirklees that they wish to change their preference.

If you aren't happy with the place you have been offered for your child, please follow the link below

<http://www.kirklees.gov.uk/beta/admissions/about-admission-appeals.aspx>

Kirklees Admissions **Telephone: 01484 225007**

pupiladmissions@kirklees.gov.uk

For information regarding admissions for places at Whitcliffe Mount, please see the relevant Admissions Policy below.

Oversubscription Criteria

If there are fewer applicants than there are places available, everyone who applies will be offered a place. When there are more applicants than there are places available there has to be a way of deciding which children are offered places. This is done by having admission criteria which are considered in strict order of priority:

1. children in public care (looked after children) and all previously looked after children, including those children who appear (to the admission authority) to have been in state care outside of England and ceased to be as a result of being adopted;
2. children who live in the school's Priority Admission Area (PAA) who have a brother or sister attending from the same address at the date of admission (the sibling rule);
3. children who live in the school's PAA;
4. children who live outside the school's PAA who have a brother or sister attending from the same address at the date of admission (the sibling rule);
5. children who live outside the school's PAA.

"The governing body is highly experienced, determined and ambitious."

Ofsted September 2017

