

15<sup>th</sup> December 2023

Dear Parent(s)/Carer(s)

### **Arrangements for the end of the Autumn Term**

Firstly, thank you for your support throughout the Autumn Term and throughout 2023. I have been Headteacher at Whitcliffe Mount for just over a year now and the support offered from staff, students, parents/carers, governors, and the local community has been incredible, particularly after the sad passing of Miss Jennifer Templar in December 2022. Whilst the end of 2022 was difficult for many, we have worked hard together to embed high standards for all and build a sense of school community at Whitcliffe Mount School. We are proud of the progress made towards our vision of "Together, we are proud to be our best".

As we move towards the end of the autumn term, I would like to remind you of some up-coming dates and share some information with you about the term ahead. School will close for the Christmas holiday on Friday 22<sup>nd</sup> December 2023. Personal Development Tutor Time (8.35am to 9.05am) and periods 1 to 3 (9.05am to 12.30pm) will be normal lessons. However, period 4 (from 12.30pm), students will take part in a festive activity with their Personal Development Tutor Group and have their lunch in school as normal. Following lunch, students will be released from school at the slightly earlier time of 1:45pm.

At Whitcliffe Mount we recognise that ensuring that attendance remains high for all is essential. This is to support all students in making better than expected progress so that they can fulfil their academic and personal potential in 2023/24 and beyond. Although we break up for the end of term later than previous years it is important to note that the last week of term is 6.25% (5/80 days) of the overall learning for the term. Therefore, it is vital all that students attend school up to and including Friday 22<sup>nd</sup> December so that they are fully supported with their learning.

School reopens on Monday 8<sup>th</sup> January 2024 at 8.00am, week 2 of the school timetable. During that first week we will be checking that all our students are prepared for a prompt start to learning – there will be planner, equipment and school uniform checks every day to ensure that all students start 2024 well.

We have had a fantastic term of celebrations – some of which include the reward Christmas lunch, Year 11 & 10 Careers Fair, Year 8 Personal development Day, Year 9 careers networking event, Christmas Jumper Day, Year 7's visit to the pantomime and lots of sporting wins! Look out for the release of the Whitcliffian newsletter, on the school Twitter feed and on the website, for more celebrations and details of the events that have taken place throughout November and December 2023. There has been much to celebrate!



01274 851152



Whitcliffe Mount,  
A SHARE Academy  
Turnsteads Avenue, Cleckheaton,  
West Yorkshire BD19 3AQ



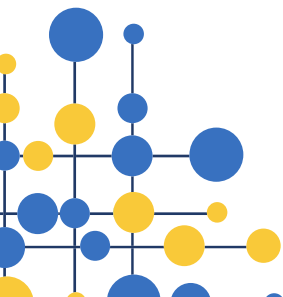
[whitcliffe.office@sharemat.co.uk](mailto:whitcliffe.office@sharemat.co.uk)

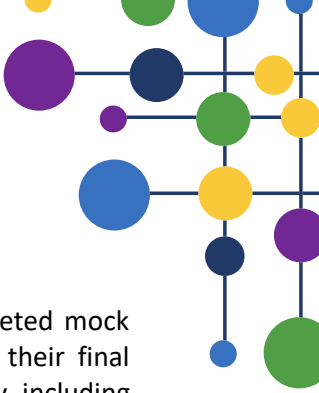


[www.whitcliffemount.co.uk](http://www.whitcliffemount.co.uk)

Valuing people, supporting personal best

**Share Multi-Academy Trust**, an exempt charity and a company limited by guarantee. Registered in England and Wales 07729878.  
**Head Office** SHARE Multi-Academy Trust, c/o Shelley College, Huddersfield Road, Shelley, Huddersfield, HD8 8NL





A huge well done to Year 11 for the December mock examinations. Students have completed mock examinations across the curriculum in examination conditions to help prepare them for their final examinations in the summer term. Their behaviour, work ethic and focus has been exemplary, including the huge number of students who are attending after school Achieve sessions with staff. Teachers will be busy adapting lessons to help support any gaps in learning as we move into the Spring term so that all students feel supported and well-prepared for the term ahead.

We hope the year 7 students have settled well into secondary school life, having completed their first full term at Whitcliffe Mount. It has been a delight to get to know them a little and to observe the mature way that they conduct themselves around school and to see that they are growing in confidence as each day passes.

We remain proud of all of our students and look forward to welcoming everyone back in January for what will be a busy and eventful term. We would like to wish you all a Merry Christmas and a Happy New Year. We hope you enjoy the festive period, and we look forward to seeing you on Monday 8<sup>th</sup> January 2024.

Yours faithfully

A handwritten signature in black ink, appearing to read 'R. Hesmondhalgh', with a stylized flourish at the end.

Rebecca Hesmondhalgh  
Headteacher