



Whitcliffe Mount

A Welcome to our SEND & Wellbeing Provision
2024-2025



Together, we are proud to be our best

Welcome to Whitcliffe Mount!

We are really looking forward to meeting you.

We know this is going to be a whole new experience for you. For some of you it will be exciting and you will be eager to start and for others you may feel nervous, anxious or worried. In this guide we will introduce you to our SEND and Wellbeing provision, which we call Inspire, and some of the people who will be ready to help you from the moment you step through our front door.

We will explain some of our routines and help you to understand what your school day might look like in a little more detail. This will hopefully help you to be more prepared for your first day at Whitcliffe Mount.

Our aim is to make sure your transition to Whitcliffe Mount is as smooth and enjoyable as possible. If you have any concerns, you can email our Assistant SENDCo at jane.hobson@sharemat.co.uk.

The Inspire Team



Meet the Team



**Mrs N Dawe – Assistant
Headteacher - Inclusion**

I am really looking forward to meeting you all. My job is to make sure you are looked after from before you even start at Whitcliffe Mount. I have already spoken to your primary school to gather lots of information about how to help you enjoy, achieve and celebrate at Whitcliffe Mount. I am also an English teacher so might see some of you in the classroom too. Let me introduce my team who will be working with you on a daily basis....



**Mrs J Hobson
Assistant SENDCo**



**Mrs C Stephenson
SEND Senior ETA**



**Mrs K Wood
SEND Administrator**

**If you need to contact any of us,
email office@whitcliffemount.co.uk and they will
forward your email to the relevant person.**

Educational Teaching Assistants (ETA)

We are a team of Educational Teaching Assistants here to support you. We will sometimes be there to help in your lessons. We will be there to support and guide you in your form and will be on duty in the Inspire area and garden at breaks and lunchtime. We may also work one to one with some of you or in small groups delivering targeted interventions to help you. We run some fantastic after school activities that range from help with Achieve, to social and fitness. If you see us around the building, don't be shy, say hello! We are here to help you in any way we can.



Mrs D Fahey



Mrs S Wilcher



Mrs B Rhodes



Miss G Prendergast



Mrs J Murphy



Mrs J Tomlinson



Mrs C Heath



Miss K Dyson



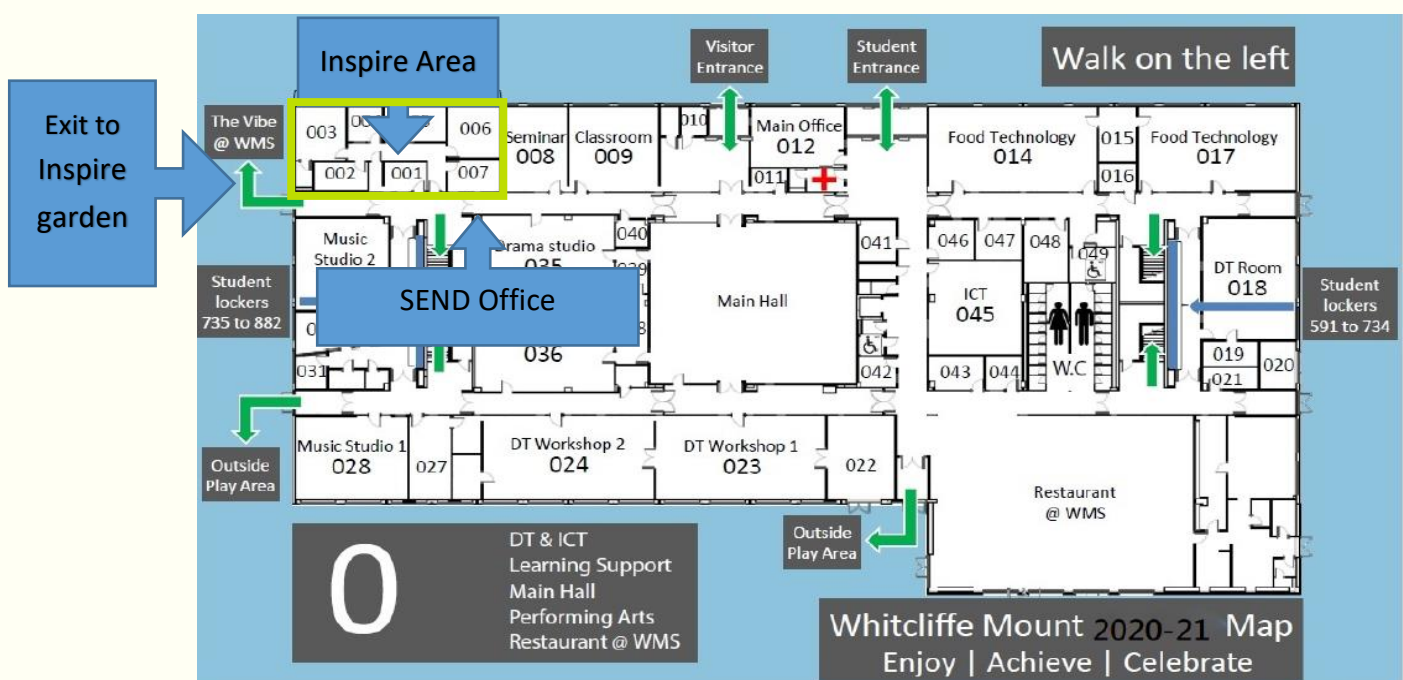
Mrs K Gallagher

An Introduction to **INSPIRE**

Inspire is our amazing in-house provision, which offers both academic and wellbeing support to students at Whitcliffe Mount.

We look to provide support within a safe environment for students and a number of exciting groups and sessions, to help you enjoy your time at school and to successfully contribute to school life and beyond.

The map below shows the ground floor level of school. You can see our inspire area marked, along with Miss Bryan's office and the access to the Inspire Garden.



Here are a few of the offerings we have as part of our Inspire area:

- **Breakfast club** – Open to all SEND registered students as a quieter area to come and prepare themselves for the day ahead.
- **Settling in sessions** – Registration and period 1 is open to students who need a little extra support to prepare them for the day. This can be for an agreed period of time or just a one-off.
- **Break and lunch club** – Students can meet friends, play games or sit in a calm quiet environment.
- **Inspire Garden** – Our beautiful quiet outdoor area can be used at breaks and lunchtimes for our SEND students.

The **INSPIRE** Garden

This is our Inspire Garden which is open for social times.

This is a calmer environment where you can enjoy your breaks and lunchtimes.



Comments from Current Students

We asked a few of our students for their views on the Inspire area and Garden.

Sarah Y7

Calmer than the main school
Quiet at lunch
Really nice staff
Relaxing garden to play out in

Ryan - Inspire has helped me makes lots of new friends and come out of my shell with those friends. I like that I can meet nice people in a less 'rowdy' setting than in a regular classroom.

Ryan's Parent – I agree with Ryan's comments and socially it has been a great benefit to Ryan.

Phoebe - When I started in Year 7 I really quickly made friends and all the teachers were very helpful and kind.

Phoebe's Parent - Having two children with additional needs I honestly can't fault the school, especially the SENCO team, and in particular Miss Bryan – she's always stayed I contact. I feel like another school wouldn't go above and beyond like Whitcliffe have, and as a parent I have such a good relationship with teachers.

Theo - Inspire is a calm and relaxing place and the garden is a really nice space when you need to calm down.

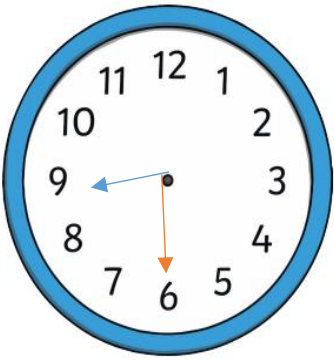
Recently, I have been telling my younger cousin (who is currently in Year 6) how easy I found the transition into Year 7, despite joining Whitcliffe slightly later in the school year.

Anon - My son struggled with the transition but I found the school really supportive, especially Miss Bryan, and once the issues were raised things were quickly put in place to help him out.

The School Day

The School day starts at 8:30am and ends at 3pm.

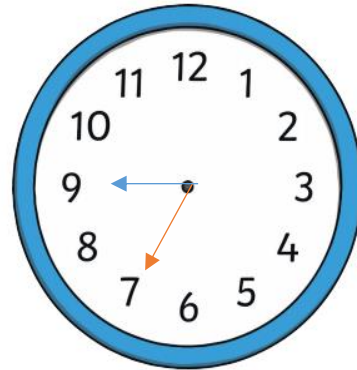
Morning Timetable



8.30am



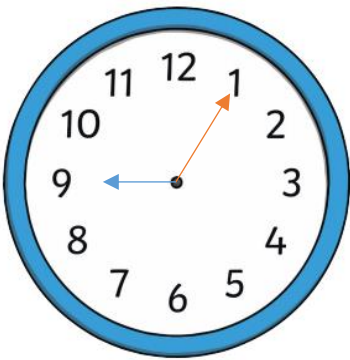
School starts –
students make their
way to form.



8.35am

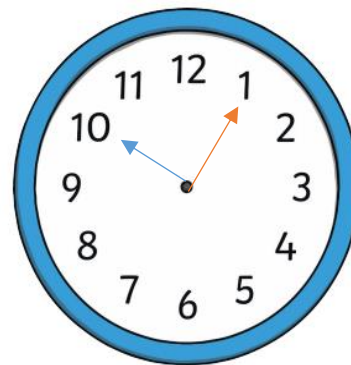


Form begins.
The bell will sound.



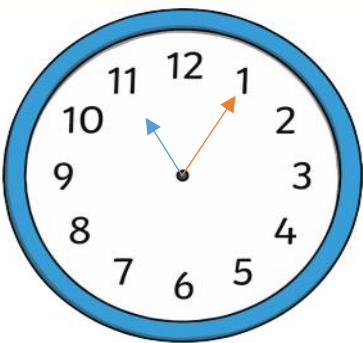
9.05am

Period 1 begins.



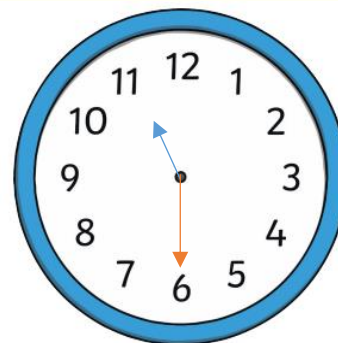
10.05am

Period 2 begins.



11:05am

Break.

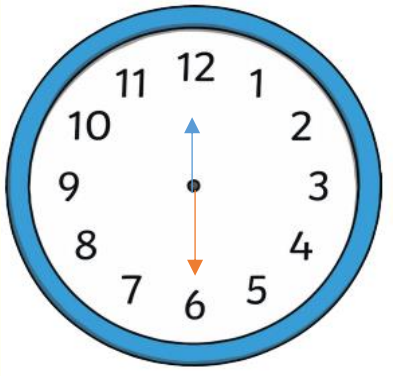


11.30am

Period 3 begins.

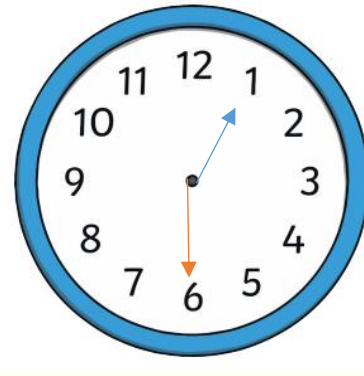
The School Day

Afternoon Timetable



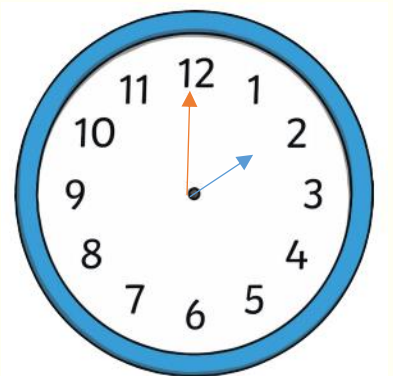
12.30pm

Period 4 begins.



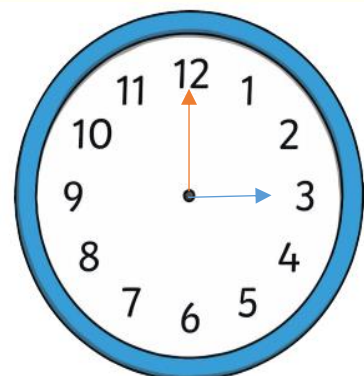
13:30pm

Lunch Break.



2.00pm

Period 5 begins.



3.00pm

Home Time.

Timetables

You will be given a timetable on your first day. You will have a timetable for week 1 and a different timetable for week 2. Stick these in your planner so you don't lose them. It is also important to remember which week you are on so you bring the right equipment and go to the right lessons. To help you remember this, we have put the week number in your planner. Your form teacher will explain all of this and there will be plenty of time to ask questions.

Timetables

The activity below is a great way of learning how to use a timetable and plan how to be prepared for each day in school. Why not have a go?

Getting Ready for the Secondary School Day

Here is an example of a secondary school timetable. Look carefully at the timetable, read the information underneath and then answer the questions.

Day of the Week	Period 1	Period 2	Period 3	Lunch	Period 4	Period 5
Monday	PE	Maths	English	Packed Lunch	Science	History
Tuesday	Spanish	Food Technology	French	School Dinner	Business Studies	English
Wednesday	Science	Maths	PE	School Dinner	Geography	Technology
Thursday	French	English	Business Studies	Packed Lunch	Coaching Time	Geography
Friday	Science	Spanish	Maths	School Dinner	History	PE

- For food technology, you need to take in the ingredients you need to make your food.
- For PE, you need your PE kit.
- For every other lesson, you need to take your homework in.
- For **all** lessons, you will need your planner.
- When you are having a packed lunch, you will need to remember to take it with you.
- When you are having a school dinner, you need to make sure you have enough money with you.
- You go to school on the bus every day so you need your bus pass **every day**.

Use the information you have to answer the questions below. Think about which lessons you have and what else you might need for the day.

1. It is Monday tomorrow. What do you need to pack into your school bag? _____

2. It is Thursday tomorrow. What do you need to pack into your school bag? _____

3. It is Friday tomorrow. What do you need to pack into your school bag? _____

4. It is Tuesday tomorrow. What do you need to pack into your school bag? _____

5. It is Wednesday tomorrow. What do you need to pack into your school bag?



Hints and Tips

Here are some helpful tips you could use to help you get organised for your day in school and to make sure everything goes smoothly.

Our Whitcliffe Mount website has a great [Transition Zone](#). The Transition Zone has lots of information and activities to help guide you.

Remember we have Week 1 and 2 with different lessons, so check your planner!

Breaks and lunchtimes may be busier than you are used to. If needed, you will be able to access our inspire lunch, which is much smaller.

If you are feeling a bit overwhelmed, worried or have another problem you need help with, you can always speak to your form tutor, or the inspire team.

There will be lots of staff and students happy to help you find the way to your lessons!

If you forget any equipment, ask your teacher if you can borrow it. The PE department also keep spare kit.

Some of the older students may seem bigger than you.... remember they were new to the school once so they know how you feel. Don't be afraid to ask them if you need help with something.

Look at your planner to see what lessons you have, and pack your bag with the right books and equipment for each day. You could ask someone at home to help with this!

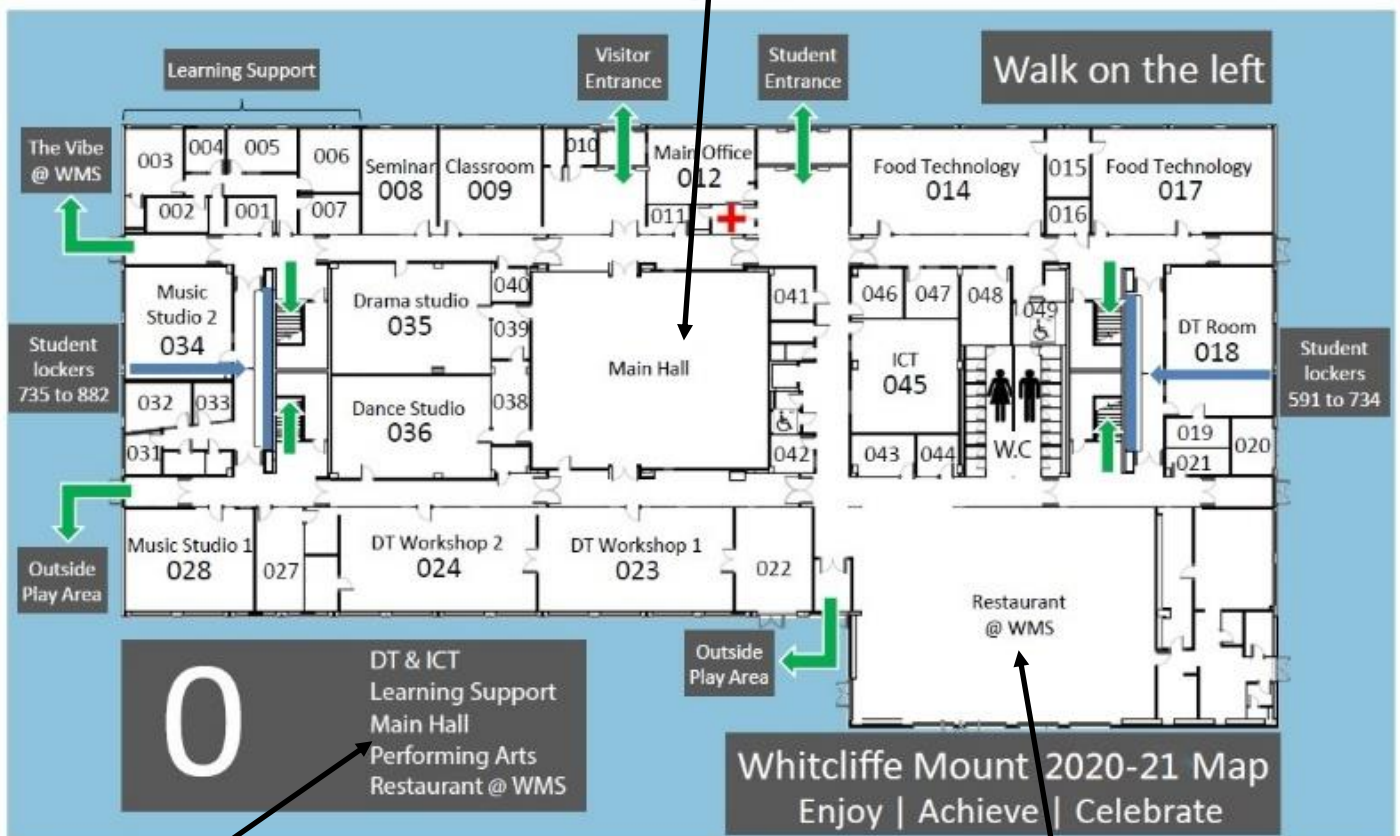
If you'd like to see our interactive map and photographs of the school visit our [Virtual Tour](#) pages on the school website.

The School Layout – Ground Floor

The following pages show maps of the school building. We have 3 floors and each floor is a different colour. You will receive a copy of these maps when you start at Whitcliffe Mount to further help you with navigating. Virtual Tours can also be found on the transition pages of the website or by clicking [here](#).

The bottom floor is blue and all of the room numbers start with a 0.

This is the main hall.
This is where you will have assemblies.



These are some of the lessons you will have on this floor.

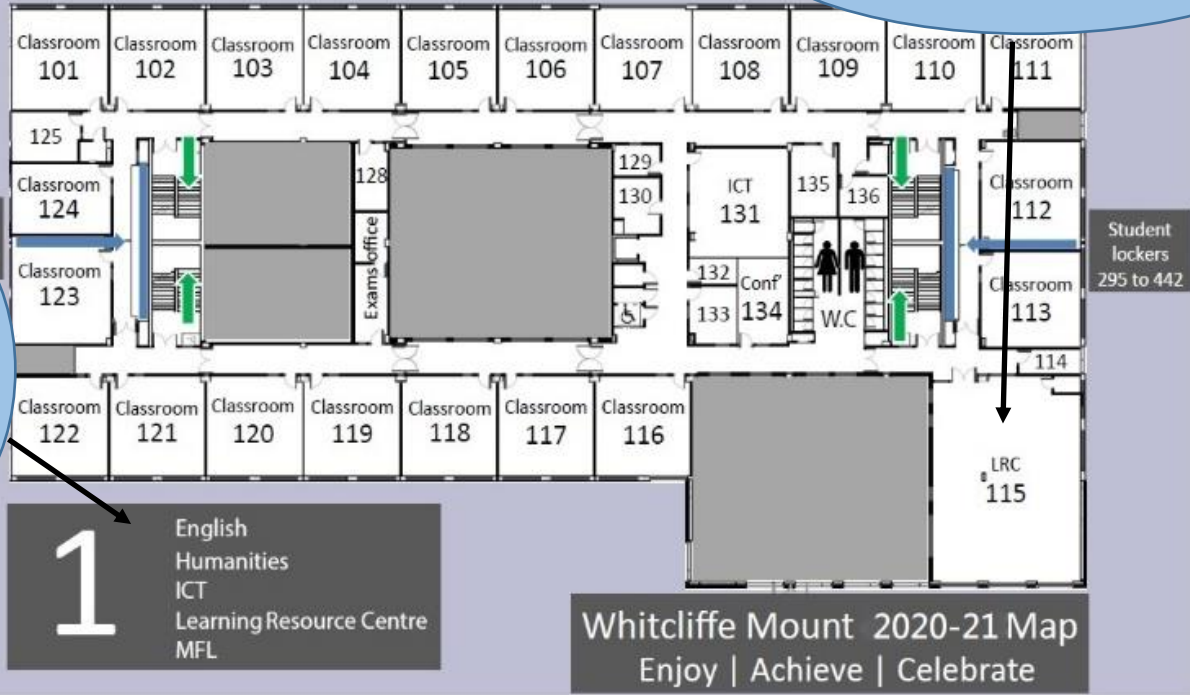
This is the restaurant where you can spend your social times. You can also go to the playground from here.

The School Layout – Floor 1 & 2

The first floor or floor one is purple and all of the room numbers start with 1.

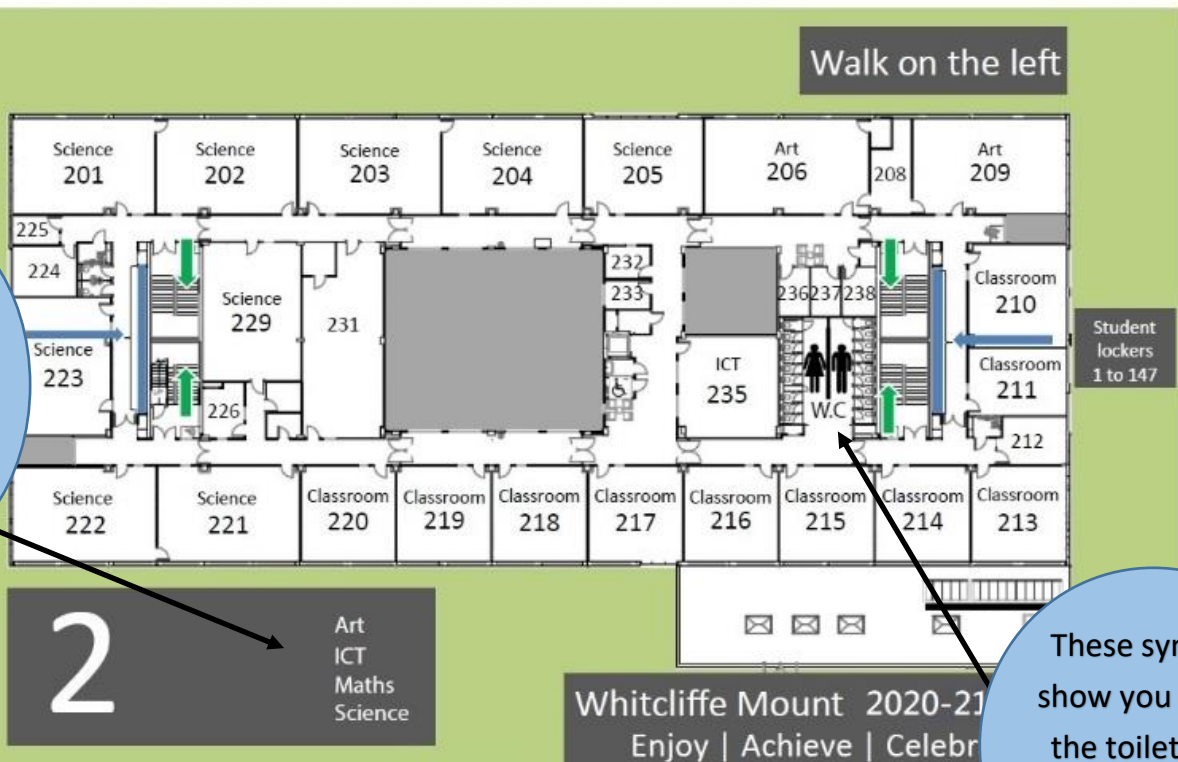
You will find the LRC on this floor. This is where lots of our after school activities are run.

These are some of the lessons you will have on this floor.



The second floor or floor two is green and all of the room numbers start with a 2.

These are some of the lessons you will have on this floor.

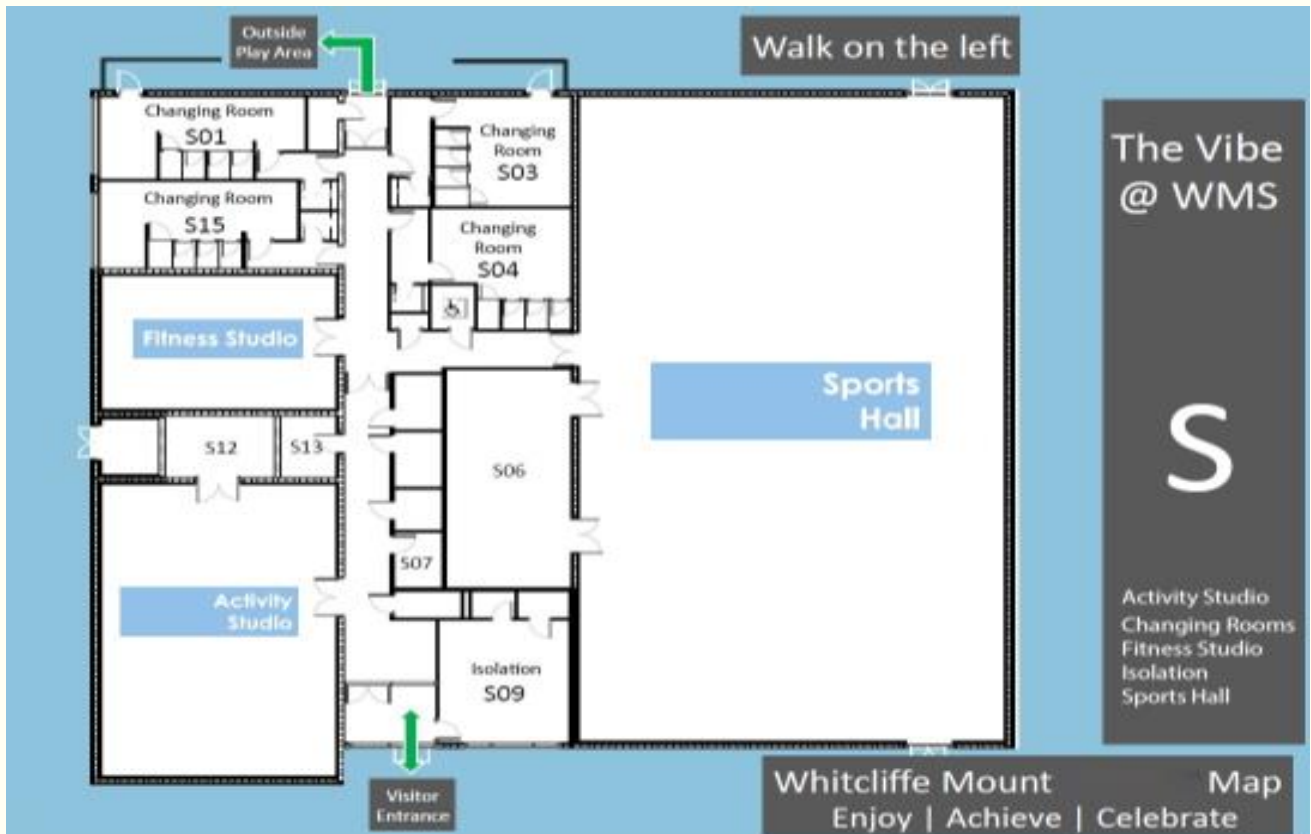


These symbols show you where the toilets are, every floor has toilets.

The School Layout – The Vibe

The Vibe is our state of the art, fully accessible Sports Hall, fitness and activity studio.

The building is based on the ground floor and can be accessed from within school.



All About Me

We would love to learn more about you. Fill out the flag below with wonderful facts about you and bring it with you when you join us at Whitcliffe Mount. We will make bunting from your flags to brighten our Inspire Area, so make it as colourful as you like.

This area will be used to fold over and fix the bunting so don't write here

Write your first name in the banner here

WHITCLIFFE MOUNT
A SHARE Academy

Colour is fab

Fill the flag with lots of wonderful information about you

You can draw shapes and images or make patterns to write your fab facts in

Ideas
What do you like to do?
Favourite songs?
Sports teams you like?
What makes you happy?
What makes you sad?
Favourite Colour?
Favourite thing to do?