

6th September 2024

Dear Parents/Carers

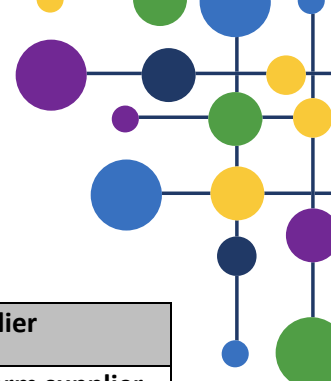
We would like to take this opportunity to **thank you and your child(ren) for your support** in allowing the return to school to be both positive and highly effective. We are really proud to say that it has been a successful start to the term; we are all settling into good routines that are helping all to keep safe and to move calmly around school.

We would like to **share with you and celebrate the schools' attendance** for our first week, which has been 96.4% which is well above national average. This is **incredible** and we are so proud of the students for returning to school so positively after the holidays and engaging with their **learning** and our **expectations**. Our attendance expectations will remain high moving forwards to provide the students with the best chances of succeeding in their lessons. To remind you, if your child is unwell, we would always encourage them to attend school and see how they are feeling once in the building. Should they need to go home due to illness, we will contact home and request your support. Should you need to inform us of an absence please do so before 8.30am, via email or telephone. Three or more days of absence will require medical evidence or a leave of absence. Without this, we will consider issuing a penalty notice. Please see our policy for further information: [WMA Attendance Policy \(whitcliffemount.co.uk\)](https://www.whitcliffemount.co.uk/policies/WMA-Attendance-Policy)

Our focus for the first few weeks will be ensuring our routines are embedded and our expectations are high within a safe environment. This includes not only raising expectations within the classroom but making sure that all Whitcliffe Mount students are meeting the school's full expectations, this includes uniform. Therefore, we would like to take this opportunity to remind parent/carers of our uniform policy: [Whitcliffe Mount, A SHARE Academy - Uniform & Equipment](https://www.whitcliffemount.co.uk/policies/Whitcliffe-Mount,-A-SHARE-Academy--Uniform-&Equipment)

95% of our students have returned to school this week with impeccable uniform which meets our expectations; thank you. However, we must highlight that any child whose uniform does not comply, will be requested to borrow from our freshly laundered uniform shop. If they are unwilling to correct their uniform, the usual behaviour sanctions will apply. Therefore, we are asking for your support on this issue as all students **must** be in full, appropriate Whitcliffe Mount School uniform in line with our policy.

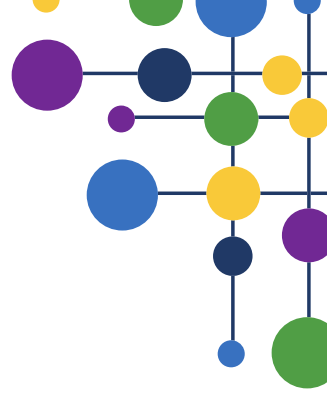
To remind you of the policy that has now been in place since September 23:



Item of clothing	2023/24 and beyond policy	Supplier
Black blazer	<u>WMS 'new logo' blazer</u> – all students	Uniform supplier
White school shirt	Plain white school shirt	Any
School tie	<u>WMS school tie from September 2024</u> (colour linked to year group) 7 – Yellow 8 – White 9 – Green 10 – Blue 11 – Purple	Uniform supplier
Black school skirt	<u>Tailored</u> black school skirt (straight or pleated) and minimum of fingertip length - <u>these must not be a jersey material</u>	Any
Black school trousers	<u>Tailored</u> black school trousers - <u>these must not be a jersey material</u>	Any
Black school tights or socks	Black school tights or socks (plain)	Any
Black school shoes	Black school shoes (no trainers or pumps or logos)	Any
Black V-neck school jumper (<u>optional</u>)	Black V-neck school jumper with WMS logo	Uniform supplier

WMS PE Kit – September 2023 and beyond (all phased in by September 2025)

Item of clothing	2023/24 and beyond policy	Supplier
WMS PE top	Navy round neck sports top (short sleeved) with WMS logo.	Uniform supplier
WMS PE ½ zip training top (<u>optional</u>)	½ zip training top (long sleeved) with WMS logo	Uniform supplier
WMS PE sports rain jacket (<u>optional</u>)	Navy sports rain jacket with WMS logo	Uniform supplier
Tracksuit bottoms	Plain navy slim leg tracksuit bottoms	Uniform supplier
Leggings	Plain navy leggings (<u>no logo</u>)	Any/Uniform supplier
Shorts	Plain navy shorts (<u>no logo</u>)	Any/Uniform supplier
Sports socks	Navy sports socks	Any/Uniform supplier
Sports trainers	Sports trainers	Any



To remind you, our uniform suppliers are:

Rawcliffes - 18A Crackenedge Lane, Dewsbury WF13 1PT
Contact: 01924 465510 www.smartschoolwearcentre.co.uk

Smart Uniforms, 1-3 Cheapside, Batley WF17 5ND
Contact: 01924 442294 www.smartuniforms.co.uk

If you require support with the school uniform, please contact us to discuss. Alternatively, you can visit the Uniform Exchange online to request free uniform: <https://www.uniform-exchange.org/free-school-uniform/>. You can also donate if you have uniform you no longer need: <https://www.uniform-exchange.org/donation-points/>.

When travelling to and from school, Whitcliffe Mount School uniform must be worn.

Yours faithfully,

Miss K Bland
Deputy Headteacher